An aerial photograph of the San Francisco Bay Bridge, showing the bridge deck, the water, and the city skyline in the background. Overlaid on the right side of the bridge is a graphic of four interlocking puzzle pieces in green, blue, purple, and orange, arranged in a semi-circle. A dashed line with an arrow indicates a clockwise flow from the green piece to the blue, then to the purple, and finally to the orange piece.

# ADAPTATION ROADMAP

A Practitioner's Guide to Plan and Implement a  
Collaborative, Equitable, Integrative, and Flexible  
Approach to Sea Level Rise Adaptation

*Training Webinar!*





# Using the Adaptation Roadmap: A Practitioner's Guide

## *Training Webinar*

Introduction

Chapter 1. Build Your Adaptation Roadmap

Chapter 2. Center People in Decision-Making

Chapter 3. Set Local Context and Sense of Place

Chapter 4. Shape a Shared Vision of the Future

Chapter 5. Bring Together Shared Solutions

Chapter 6. Pathways Approach to Implementation

Audience Q&A

## Speakers



**Jaclyn Mandoske**  
Coastal Scientist, BCDC  
jaclyn.mandoske@bcdccalifornia.gov



**Chris Choo**  
Planning Manager,  
Marin County  
cchoo@marincounty.org



**Jeremy Lowe**  
Senior Environmental  
Scientist, SFEI  
jeremyl@sfei.org



**Claire Bonham-Carter**  
Director of Sustainable  
Development, AECOM  
claire.bonham-carter@aecom.com

# Why the Adaptation Roadmap?

## Moving *Beyond* Vulnerability

Understanding  
**Vulnerabilities**  
to Sea Level  
**Rise** is  
Essential



Collaborative and  
Equitable **Adaptation**  
**Outcomes** that Are  
Locally-Driven and  
Regionally Aligned

Values   Environment   Root Causes of Inequity  
Laws   Knowledge   History   Desired Future  
Politics   Engineering   Land Uses   Decision-Making  
Non-Traditional Timelines   Intergenerational Challenge



**Identifying Adaptation Solutions is a Societal Response**

# Why the Adaptation Roadmap?

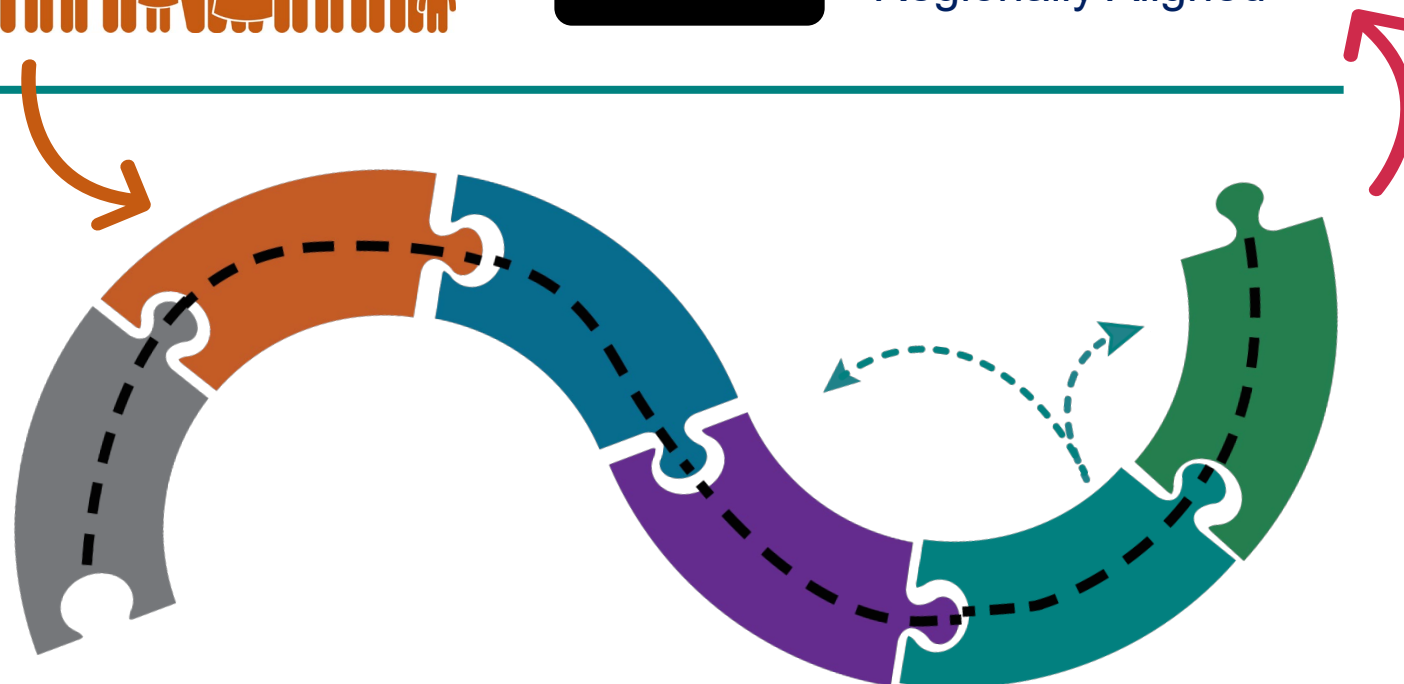
## Moving *Beyond* Vulnerability

Understanding  
**Vulnerabilities**  
to Sea Level  
**Rise** is  
Essential



Collaborative and  
Equitable **Adaptation**  
**Outcomes** that Are  
Locally-Driven and  
Regionally Aligned

The Adaptation Roadmap is a **six-chapter handbook** for practitioners to *move beyond* vulnerability assessments to **collaboratively build equitable outcomes that respond to change over time** with corresponding workbooks to guide decision-making.





# Who Is This Resource Designed For?



## Practitioners

Local Government Staff  
Community-Based Organizations  
Non-Governmental Organizations  
Tribal Governments  
Special Districts  
Consultants

## Build A Representative Core Team

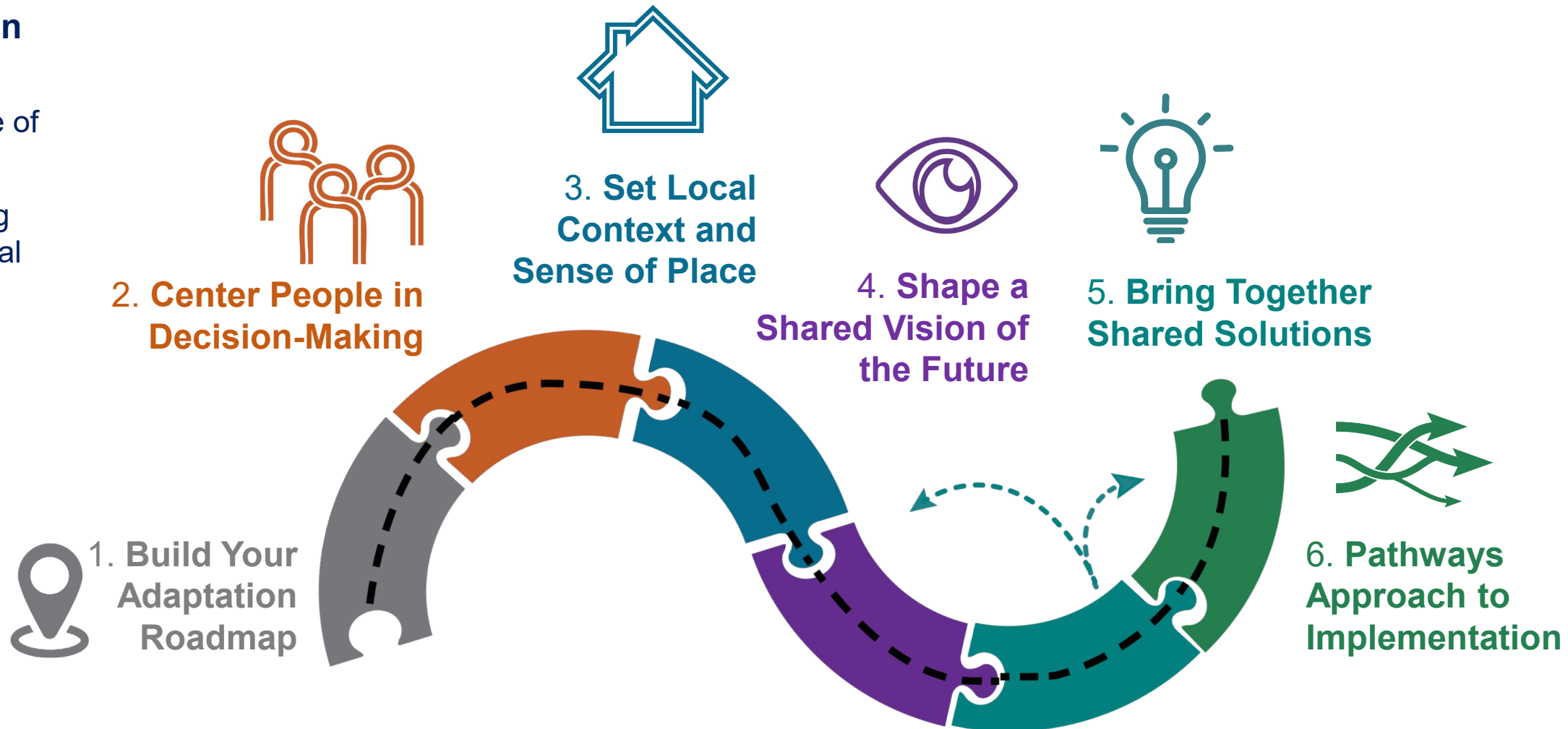


## 2.1 Managing the Adaptation Process

# What's in the Adaptation Roadmap?

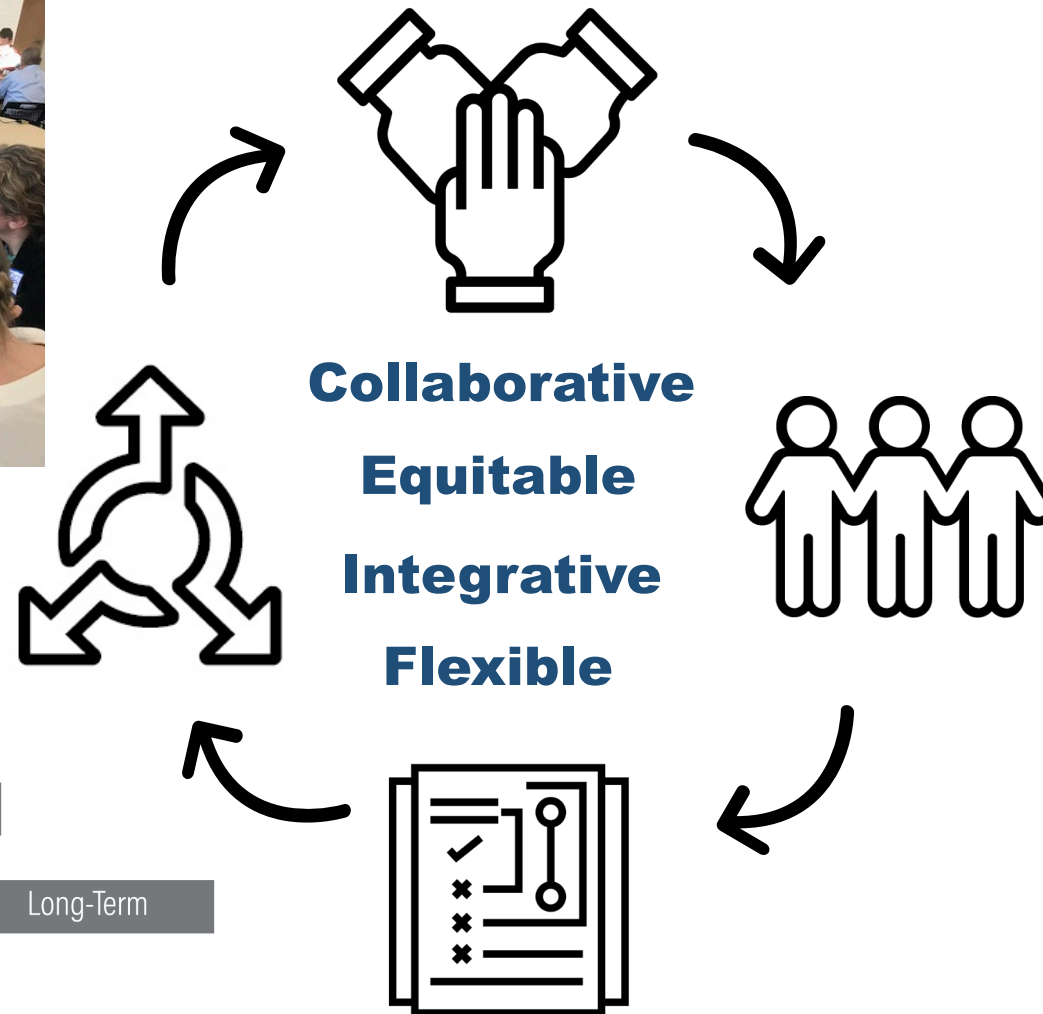
## Introduction

- Laying the Landscape of Adaptation
- Embedding foundational principles
- Using the Adaptation Roadmap





# Built Upon Four Foundational Pillars



## Adaptation Pathways

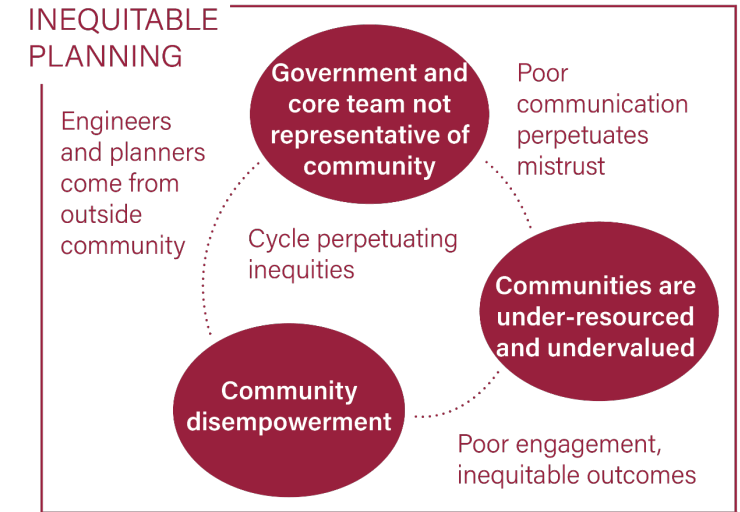
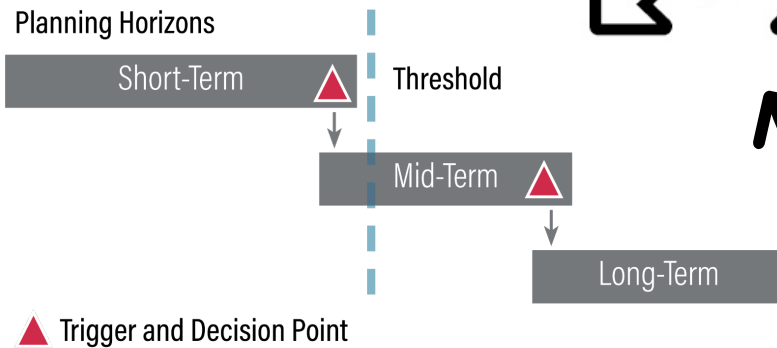
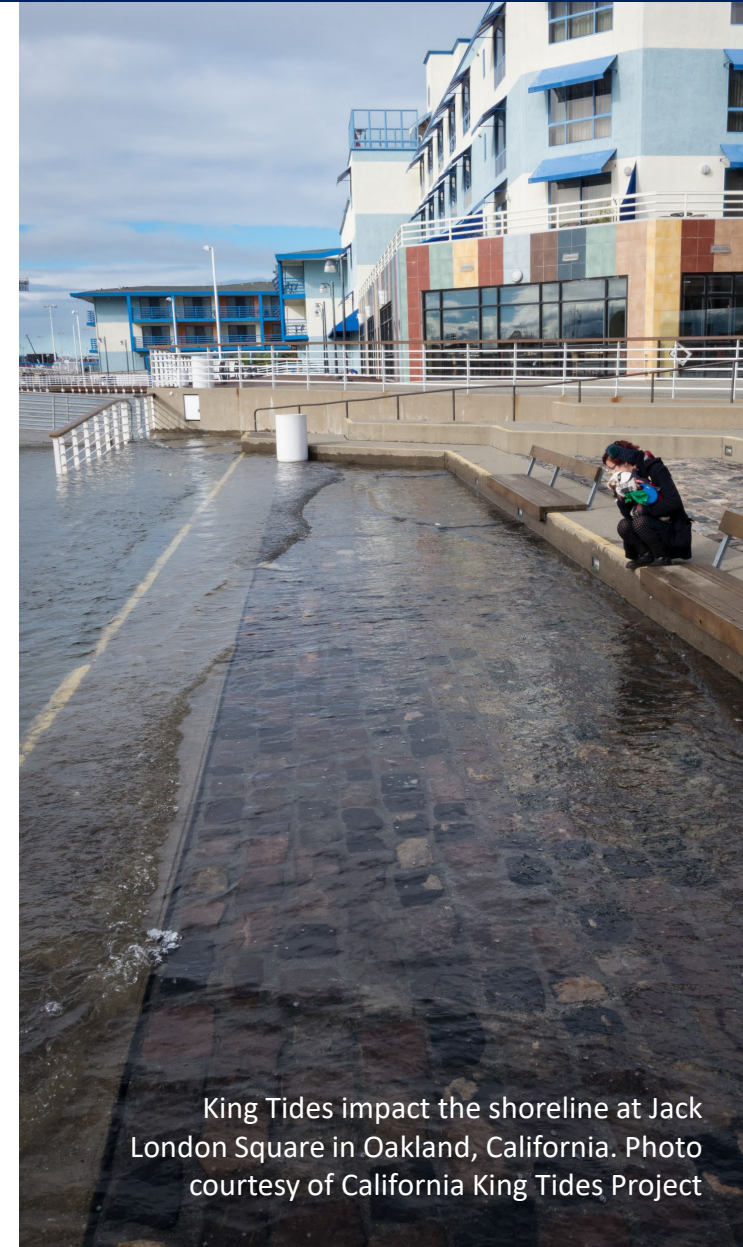


Figure 4 · Cycles of Inequitable and More Equitable Planning  
| Graphics redrawn from the work of Phoenix Armenta, West Oakland Environmental Indicators Project (WOEIP), and Nahal Ghoghaie, BCDC.

# Using the Adaptation Roadmap Flexibly

- Can be used **in part** or in **whole**
- Fully **linkable** and designed for easy **navigation**
- Six corresponding **workbooks** to record and build upon progress
- Useful across a range of **different outcomes**
  - Community capacity building
  - Meeting plan mandates
  - Building a project
  - And more!

**Let's walk through each Chapter!**



King Tides impact the shoreline at Jack London Square in Oakland, California. Photo courtesy of California King Tides Project



# Chapter 1 Build Your Adaptation Roadmap

**Adaptation Roadmap**  
*Training Webinar*



# Chapter 1

## Build Your Adaptation Roadmap

Chapter 1 is a **self-assessment** to help you figure out **your starting point and how to use these resources to build *your* roadmap.**



**Well suited for:**

Anyone considering initiating or leading an adaptation effort – governments, NGOs, CBOs, special districts – you name it.



**Chapter Workbook Outcomes:**

- ✓ List of your Strengths and Opportunities
- ✓ List of your Challenges to Address
- ✓ Your Adaptation Roadmap: Sections of the Roadmap to Review Given Desired Outcomes

### 1.1 Assess Your What and Why

- 1.1.1 Adaptation Outcomes
- 1.1.2 Initial Lead
- 1.1.3 Motivations and Opportunities
- 1.1.4 Key Barriers

### 1.2 Assess Your Issues and Scale

- 1.2.1 Foundational Studies
- 1.2.2 Connected Issues
- 1.2.3 Sea Level Rise and Flooding Science
- 1.2.4 Scale

### 1.3 Assess Your Capacity and Resources

- 1.3.1 Government Capacity
- 1.3.2 Community Capacity
- 1.3.3 Stakeholder Support
- 1.3.4 Resources and Funding

### 1.4 Use Workbook 1

[\*\*Download Workbook 1\*\*](#)

1.4 Use Workbook 1 Outcomes



# Chapter 1 Build Your Adaptation Roadmap *In Practice*

## Adaptation Roadmap *Training Webinar*



Marin Shoreline  
Sea Level Rise Vulnerability  
Assessment



### 1.1 Assess Your What and Why

- 1.1.1 Adaptation Outcomes
- 1.1.2 Initial Lead
- 1.1.3 Motivations and Opportunities
- 1.1.4 Key Barriers

### 1.2 Assess Your Issues and Scale

- 1.2.1 Foundational Studies
- 1.2.2 Connected Issues
- 1.2.3 Sea Level Rise and Flooding Science
- 1.2.4 Scale

### 1.3 Assess Your Capacity and Resources

- 1.3.1 Government Capacity
- 1.3.2 Community Capacity
- 1.3.3 Stakeholder Support
- 1.3.4 Resources and Funding

### 1.4 Use Workbook 1

[Download  
Workbook 1](#)

1.4 Use Workbook 1  
Outcomes



# Chapter 2 Center People in Decision- Making

**Adaptation Roadmap**  
*Training Webinar*



Community members enjoy the waterfront at Heron's Head park in San Francisco.  
Photo by the Port of San Francisco licensed under CC BY 2.0.



# Chapter 2

## Center People in Decision-Making

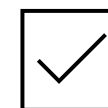


Chapter 2 supports determining **decision-making processes** and community and stakeholder group structures for **collaborative and equitable** participation and outcomes.



**Well suited for:**

**Practitioners on the Core Team and Key Partners** should work through this chapter to structure how to involve multiple people in the process to make decisions.



**Chapter Workbook Outcomes:**

- ✓ Management Team
- ✓ Co-Created Participation Strategies that includes the Decision-Making Process

### 2.1 Manage the Process

- 2.1.1 Build Your Core Team
- 2.1.2 Early Engagement With Key Partners
- 2.1.3 Consultants in Adaptation
- 2.1.4 Roles and Responsibilities

### 2.2 Input in the Process

- 2.2.1 Stakeholder Groups and Goals
- 2.2.2 Audiences Involved and Why
- 2.2.3 Identify and Map Populations
- 2.2.4 Assess Relationships for Participation

### 2.3 Participation and Decisions

- 2.3.1 Participatory Engagement
- 2.3.2 Types of Participation Structures
- 2.3.3 Decision-Making Process
- 2.3.4 Types of Networks and Agreements

### 2.4 Effective Communications

- 2.4.1 Communications Approach
- 2.4.2 Connect to Values
- 2.4.3 Make it Relatable
- 2.4.4 Frame the Message and Delivery

### 2.5 Workbook 2

[Download Workbook 2](#)

2.5 Use Workbook 2 Outcomes

## Chapter 2. Center People in Decision-Making

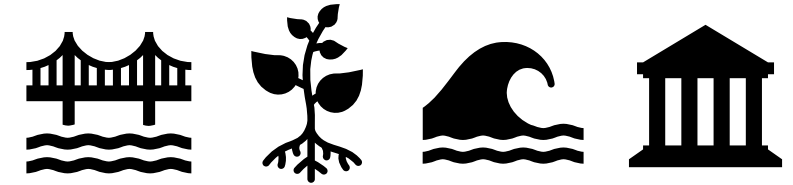
### *In Practice*

#### **Dumbarton Bridge West Approach + Adjacent Communities Resilience Study**



#### **2.1 Manage the Process**

- 2.1.1 Build Your Core Team
- 2.1.2 Early Engagement With Key Partners
- 2.1.3 Consultants in Adaptation
- 2.1.4 Roles and Responsibilities



#### **Project Management Team**

MTC, Caltrans, San Francisco Creek Joint Powers Authority, City of East Palo Alto, City of Menlo Park, State Coastal Conservancy, Bay Area Regional Collaborative, BCDC

**Key Partnerships:** Nuestra Casa and Acterra

**Consultant Team:** AECOM, SFEI, Skeo

<https://www.adaptingtorisingtides.org/project/resilient-resilience-partnerships/>

## Chapter 2. Center People in Decision-Making

### *In Practice*

#### **Dumbarton Bridge West Approach + Adjacent Communities Resilience Study**



- Held December 2019
- Facilitators presented project components to obtain feedback on draft alternatives
- Project team members participated to provide further information and facilitate discussion
- Breakout groups to discuss alternatives components, likes & dislikes
- Participants divided into 4 groups:
  - African American
  - Spanish speaking
  - Pacific Islander
  - Youth

#### **2.1 Manage the Process**

2.1.1 Build Your Core Team  
2.1.2 Early Engagement With Key Partners  
2.1.3 Consultants in Adaptation  
2.1.4 Roles and Responsibilities

#### **2.2 Input in the Process**

2.2.1 Stakeholder Groups and Goals  
2.2.2 Audiences Involved and Why  
2.2.3 Identify and Map Populations  
2.2.4 Assess Relationships for Participation

#### **2.3 Participation and Decisions**

2.3.1 Participatory Engagement  
2.3.2 Types of Participation Structures  
2.3.3 Decision-Making Process  
2.3.4 Types of Networks and Agreements

#### **2.4 Effective Communications**

2.4.1 Communications Approach  
2.4.2 Connect to Values  
2.4.3 Make it Relatable  
2.4.4 Frame the Message and Delivery

#### **2.5 Workbook 2**

[Download Workbook 2](#)  
2.5 Use Workbook 2 Outcomes



## Chapter 2. Center People in Decision-Making

### *In Practice*

#### **Dumbarton Bridge West Approach + Adjacent Communities Resilience Study**

## NUESTRA CASA FEEDBACK



Environmental  
stewardship

Living levees  
planting  
trees/vegetation  
and protecting  
marsh



Interest to  
protect homes  
and  
neighborhoods  
from flooding

Support raising  
levees



Concerns to  
moving PG&E  
substation

Could it remain  
in place or  
relocate  
elsewhere?



Groundwater  
and  
Stormwater  
impacts behind  
the levees

How will these  
be addressed?



Improve streets  
and drainage in  
EPA

Potential for  
green  
infrastructure  
opportunity



Community  
building

Interest in  
community building,  
community  
stewardship and  
disaster  
preparedness



Support for  
raising  
University  
Avenue

### 2.1 Manage the Process

2.1.1 Build Your Core Team  
2.1.2 Early Engagement With  
Key Partners  
2.1.3 Consultants in Adaptation  
2.1.4 Roles and Responsibilities

### 2.2 Input in the Process

2.2.1 Stakeholder Groups and Goals  
2.2.2 Audiences Involved and Why  
2.2.3 Identify and Map Populations  
2.2.4 Assess Relationships for  
Participation

### 2.3 Participation and Decisions

2.3.1 Participatory Engagement  
2.3.2 Types of Participation Structures  
2.3.3 Decision-Making Process  
2.3.4 Types of Networks and  
Agreements

### 2.4 Effective Communications

2.4.1 Communications Approach  
2.4.2 Connect to Values  
2.4.3 Make it Relatable  
2.4.4 Frame the Message and  
Delivery

### 2.5 Workbook 2

[Download  
Workbook 2](#)  
2.5 Use Workbook 2  
Outcomes

# Chapter 3 Set Local Context and Sense of Place

**Adaptation Roadmap**  
*Training Webinar*



Flooding of wetlands and trail during King Tides in January 2020 on a windy but clear day in Bothin Marsh in the North Bay. Photo by Steve Disenhof, courtesy of California King Tides Project.



# Chapter 3

## Set Local Context and Sense of Place

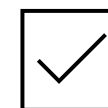


Chapter 3 supports gathering and reviewing **conditions of planning, society, economy, environment, and climate impacts** to set the context for the problem and solutions.



**Well suited for:**

Practitioners on the Core Team and Key Partners should work through this content *with communities and stakeholders* and have dialogue to understand key issues and concerns.



**Chapter Workbook Outcomes:**

- ✓ List of Plans or Processes
- ✓ Stories of Place
- ✓ Nature-Based and Physical Conditions
- ✓ Shoreline Planning Units
- ✓ Planning Horizons

### 3.1 Align Local Plans

3.1.1 Vulnerability Assessment  
3.1.2 Local Plan Alignment  
3.1.3 Neighboring or Regional Alignment

### 3.2 Community Values

3.2.1 Build Upon Community Initiatives  
3.2.2 Connect to Local Knowledge  
3.2.3 Stories of Place

### 3.3 Environmental and Physical

3.3.1 Value of Nature  
3.3.2 Projects and Infrastructure  
3.3.3 Shoreline Planning Units

### 3.4 Frame Adaptation Pathways

3.4.1 Conceptual Framing  
3.4.2 Thresholds  
3.4.3 Triggers and Monitoring  
3.4.4 Planning Horizons

### 3.5 Workbook 3

[Download Workbook 3](#)

3.5 Use Workbook 3 Outcomes



## Chapter 3. Set Local Context and Sense of Place

### *In Practice*

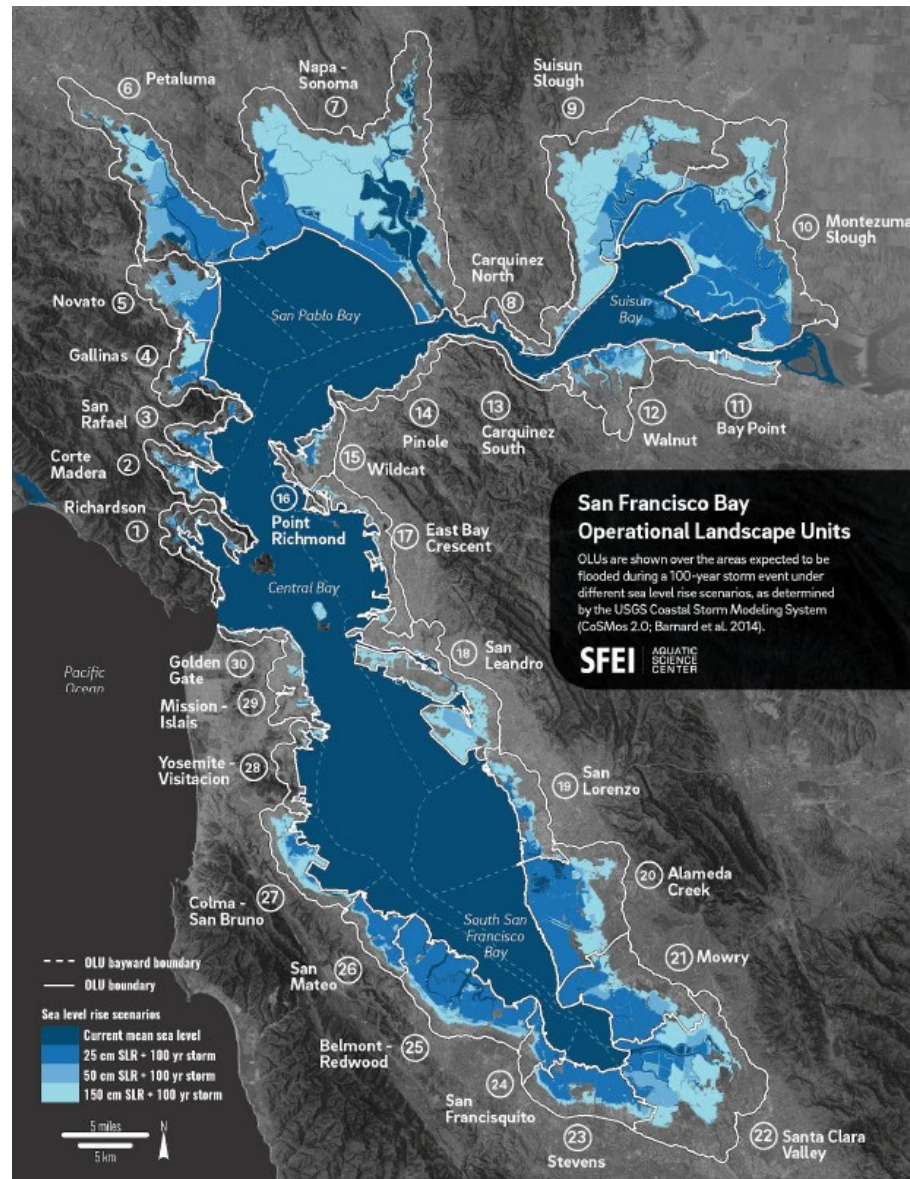
#### Applying Nature-Based Solutions

#### 3.1 Align Local Plans

3.1.1 Vulnerability Assessment

3.1.2 Local Plan Alignment

3.1.3 Neighboring or Regional Alignment



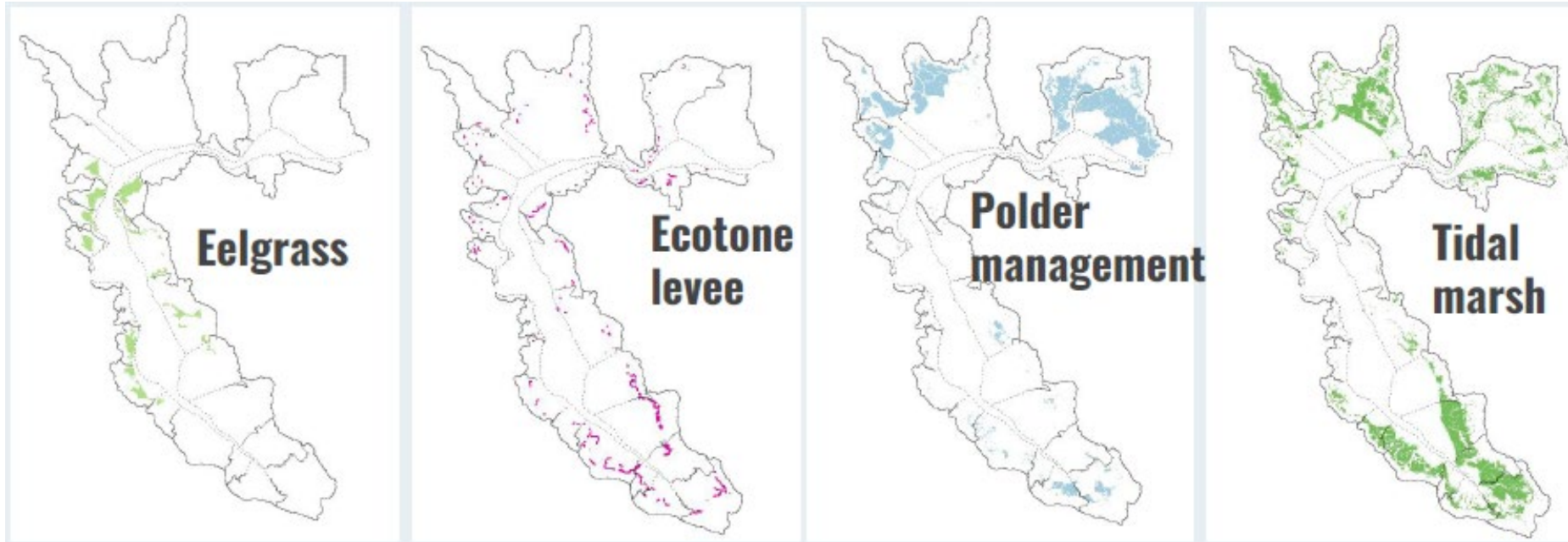
#### Operational Landscape Unit (OLU)

Areas with shared geophysical and land use characteristics *suited for a particular suite of nature-based measures*

- Bigger than a project
- Bigger than a City
- Smaller than a County

- Defined by geomorphic units & bathymetry
- Characterized by
  - Physical and ecological factors
  - Built environment patterns
  - Key vulnerabilities

# Chapter 3. Set Local Context and Sense of Place – *In Practice*



## Nature-based measures

- Nearshore reefs
- Submerged aquatic vegetation (SAV) (eelgrass)
- Beaches
- Tidal marsh
- Polder management
- Ecotone levees
- Migration space preparation
- Creek-to-Baylands reconnection
- Green stormwater infrastructure

### 3.1 Align Local Plans

3.1.1 Vulnerability Assessment  
3.1.2 Local Plan Alignment  
3.1.3 Neighboring or Regional Alignment

### 3.2 Community Values

3.2.1 Build Upon Community Initiatives  
3.2.2 Connect to Local Knowledge  
3.2.3 Stories of Place

### 3.3 Environmental and Physical

3.3.1 Value of Nature  
3.3.2 Projects and Infrastructure  
3.3.3 Shoreline Planning Units

### 3.4 Frame Adaptation Pathways

3.4.1 Conceptual Framing  
3.4.2 Thresholds  
3.4.3 Triggers and Monitoring  
3.4.4 Planning Horizons

### 3.5 Workbook 3

[Download Workbook 3](#)

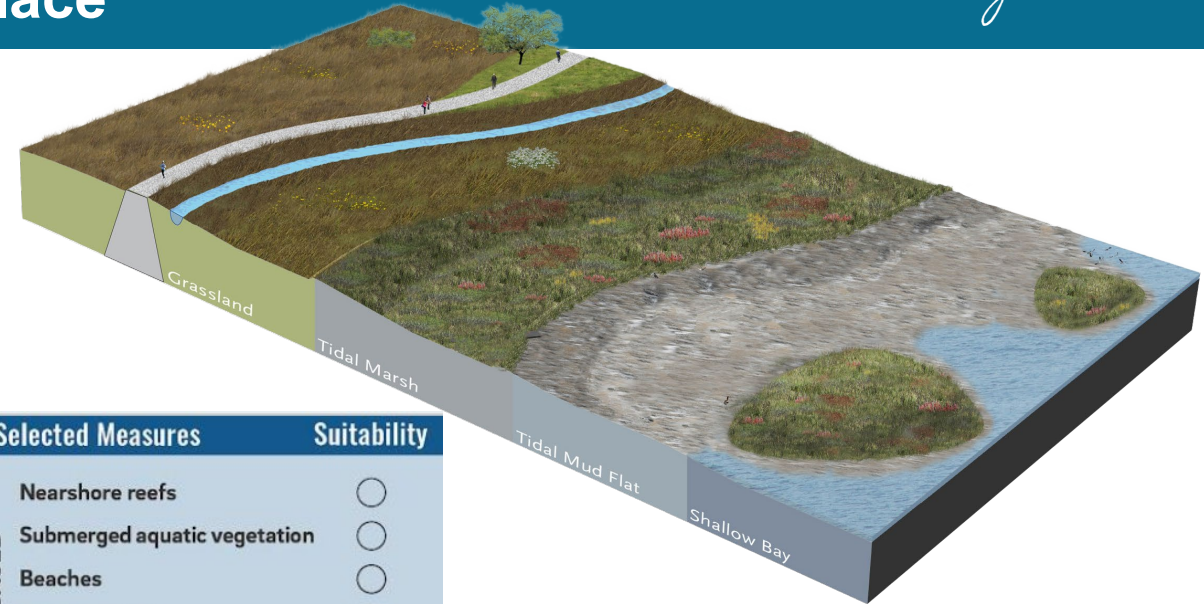
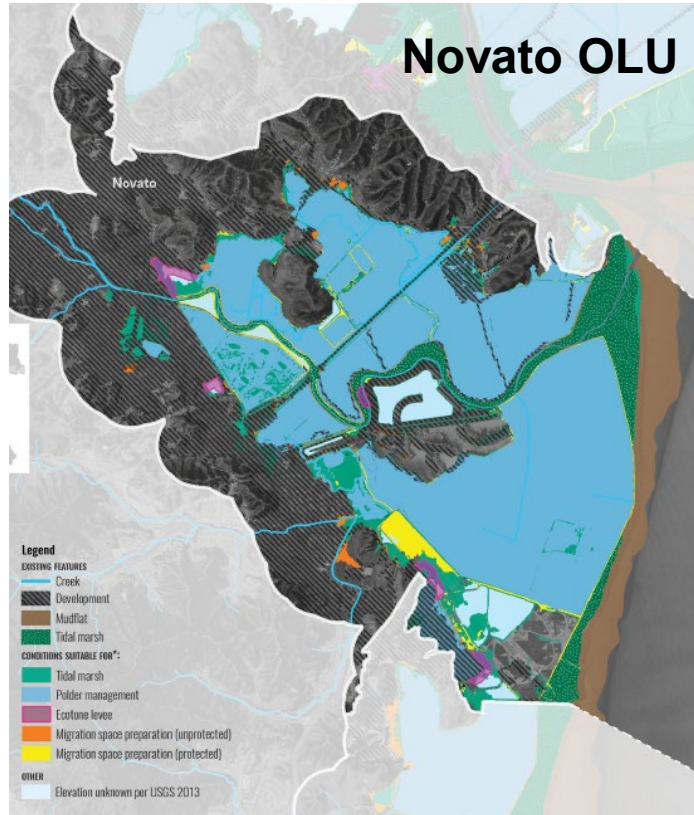
3.5 Use Workbook 3 Outcomes



# Chapter 3. Set Local Context and Sense of Place

## *In Practice*

### Applying Nature-Based Solutions



Selected Measures	Suitability
Nearshore reefs	○
Submerged aquatic vegetation	○
Beaches	○
Tidal marshes	●
Polder management	●
Ecotone levees	◐
Migration space preparation	●
	○ Limited suitability   ◐ Some suitability   ● High suitability

### 3.1 Align Local Plans

- 3.1.1 Vulnerability Assessment
- 3.1.2 Local Plan Alignment
- 3.1.3 Neighboring or Regional Alignment

### 3.2 Community Values

- 3.2.1 Build Upon Community Initiatives
- 3.2.2 Connect to Local Knowledge
- 3.2.3 Stories of Place

### 3.3 Environmental and Physical

- 3.3.1 Value of Nature
- 3.3.2 Projects and Infrastructure
- 3.3.3 Shoreline Planning Units

### 3.4 Frame Adaptation Pathways

- 3.4.1 Conceptual Framing
- 3.4.2 Thresholds
- 3.4.3 Triggers and Monitoring
- 3.4.4 Planning Horizons

### 3.5 Workbook 3

[Download Workbook 3](#)

3.5 Use Workbook 3 Outcomes

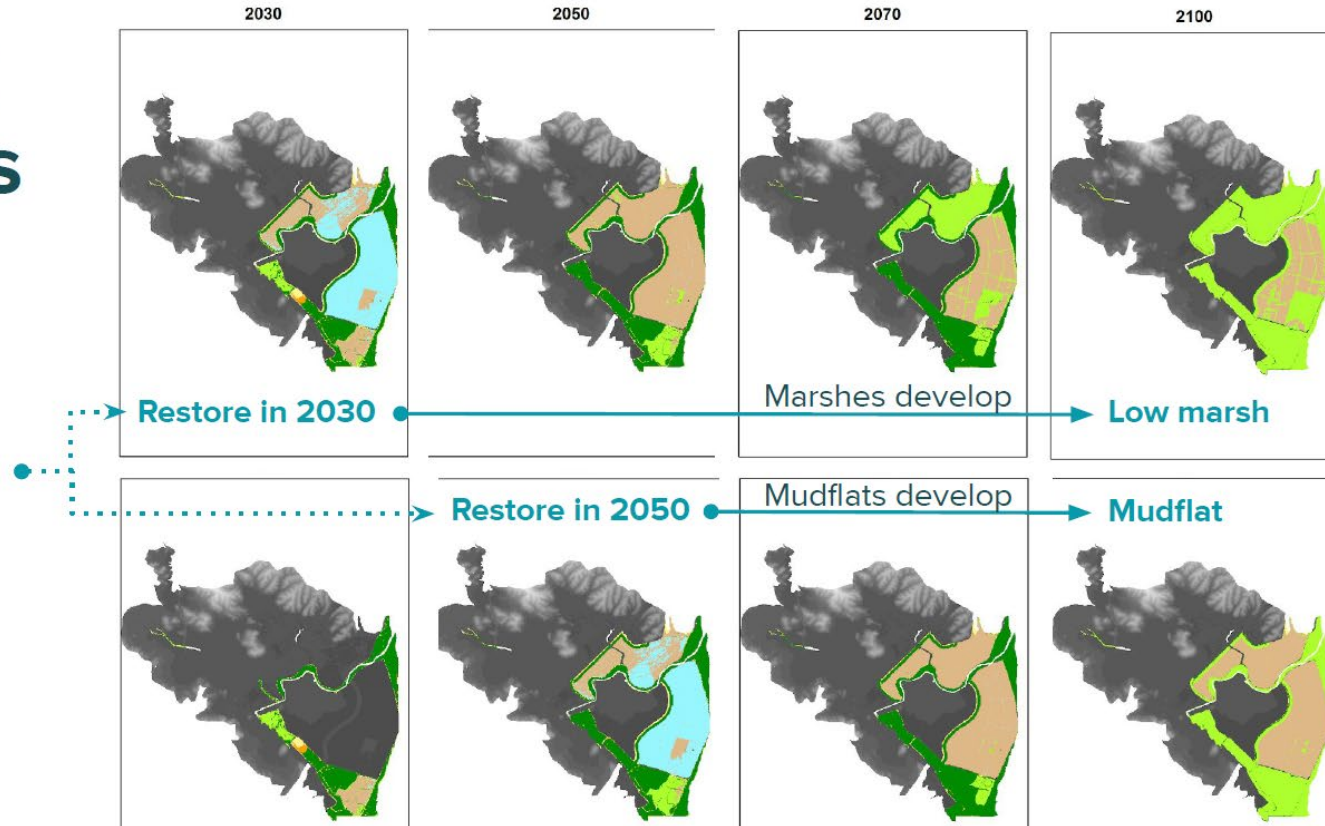
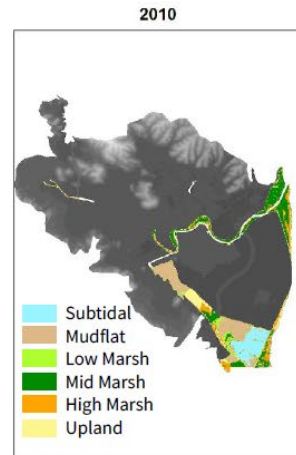


# Chapter 3. Set Local Context and Sense of Place

## *In Practice*

### Applying Nature-Based Solutions

## Timing Matters



### 3.1 Align Local Plans

- 3.1.1 Vulnerability Assessment
- 3.1.2 Local Plan Alignment
- 3.1.3 Neighboring or Regional Alignment

### 3.2 Community Values

- 3.2.1 Build Upon Community Initiatives
- 3.2.2 Connect to Local Knowledge
- 3.2.3 Stories of Place

### 3.3 Environmental and Physical

- 3.3.1 Value of Nature
- 3.3.2 Projects and Infrastructure
- 3.3.3 Shoreline Planning Units

### 3.4 Frame Adaptation Pathways

- 3.4.1 Conceptual Framing
- 3.4.2 Thresholds
- 3.4.3 Triggers and Monitoring
- 3.4.4 Planning Horizons

### 3.5 Workbook 3

- Download Workbook 3
- 3.5 Use Workbook 3 Outcomes



# Chapter 4 Shape a Shared Vision of the Future

**Adaptation Roadmap**  
*Training Webinar*



Flooding of the San Francisco Embarcadero during King Tides, courtesy of California King Tides Project.



# Chapter 4

## Shape a Shared Vision of the Future



Chapter 4 supports laying out the **problem**, determining the **future you what**, what **success means** for your communities and what it could **look like to get there**.



**Well suited for:**

Practitioners on the Core Team and Key Partners should organize opportunities for **communities and stakeholders** to co-develop the outcomes of this chapter.



**Chapter Workbook Outcomes:**

- ✓ Shared vision and guiding principles
- ✓ Scenarios that align with the vision over the short, medium, and long-term

### 4.1 Define the Problem

4.1.1 Risk Tolerance and Perception  
4.1.2 Current Decision Context  
4.1.3 Shared Problems to Respond To

### 4.2 What Success Means

4.2.1 Vision  
4.2.2 Guiding Principles  
4.2.3 Evaluation Criteria

### 4.3 Explore Future Scenarios

4.3.1 Scenarios as a Pathways Tool  
4.3.2 Strategic Approaches  
4.3.3 Scenario Planning Parameters  
4.3.4 Conducting and Summarizing

### 4.4 Outcomes and Expectations

4.4.1 Raising Difficult Topics  
4.4.2 Future Decision Context  
4.4.3 Advancing Scenarios

### 4.5 Workbook 4

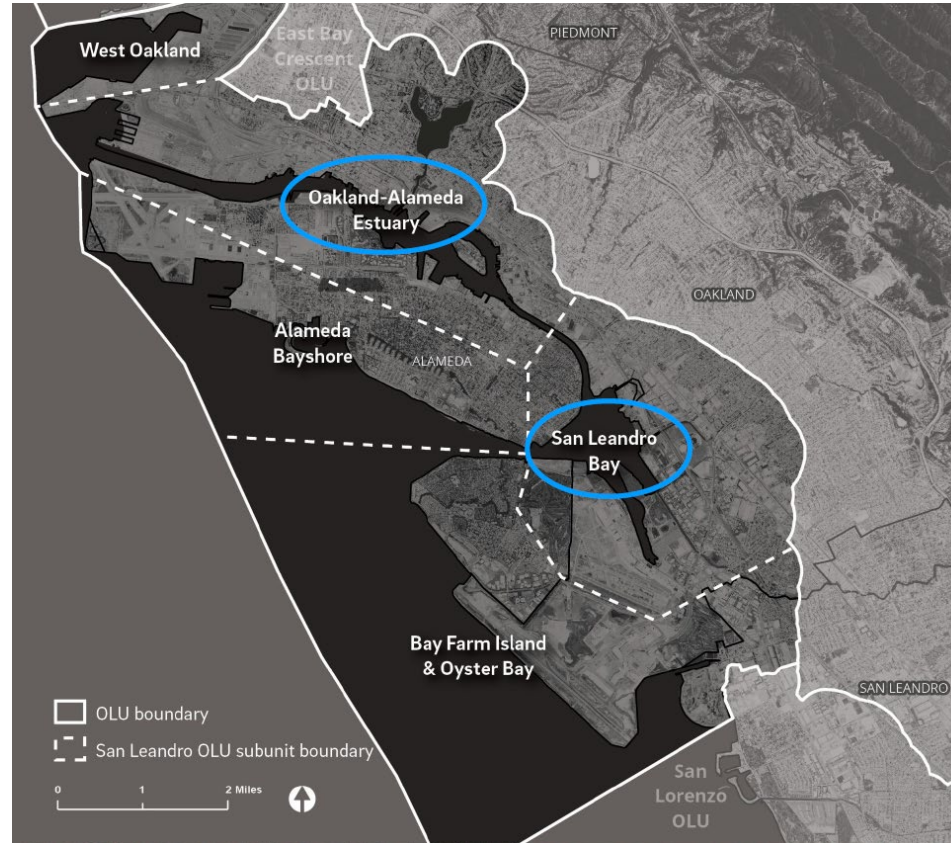
[Download Workbook 4](#)

4.5 Use Workbook 4 Outcomes

## Chapter 4. Shape a Shared Vision of the Future

### *In Practice*

#### San Leandro/ Oakland/Alameda Estuary Working Group



#### Proposed goals

- Maintain transportation corridors
- Improve community access to shoreline
- Improve flood protection for low-lying areas behind Doolittle Drive
- Maintain existing tidal marshes and improve high tide refuge opportunities for wildlife
- Create more marsh migration space and protect marsh-upland transition zone habitat

#### 4.1 Define the Problem

- 4.1.1 Risk Tolerance and Perception
- 4.1.2 Current Decision Context
- 4.1.3 Shared Problems to Respond To

#### 4.2 What Success Means

- 4.2.1 Vision
- 4.2.2 Guiding Principles
- 4.2.3 Evaluation Criteria

#### 4.3 Explore Future Scenarios

- 4.3.1 Scenarios as a Pathways Tool
- 4.3.2 Strategic Approaches
- 4.3.3 Scenario Planning Parameters
- 4.3.4 Conducting and Summarizing

#### 4.4 Outcomes and Expectations

- 4.4.1 Raising Difficult Topics
- 4.4.2 Future Decision Context
- 4.4.3 Advancing Scenarios

#### 4.5 Workbook 4

[Download  
Workbook 4](#)

4.5 Use Workbook 4  
Outcomes

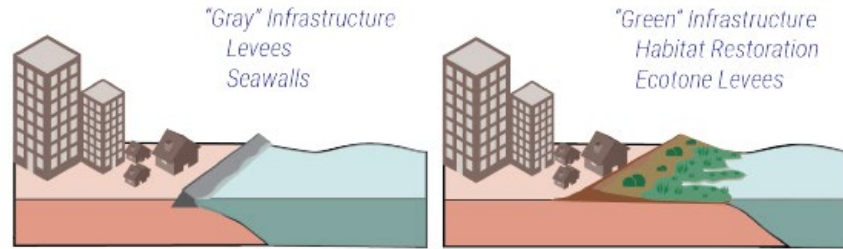


## Chapter 4. Shape a Shared Vision of the Future

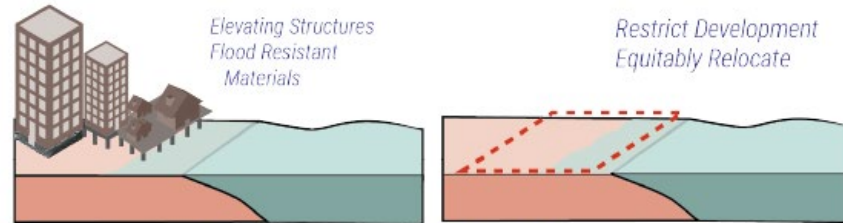
### *In Practice*

**San Leandro/  
Oakland/Alameda  
Estuary Working  
Group**

### *Sea Level Rise Adaptation Approaches*

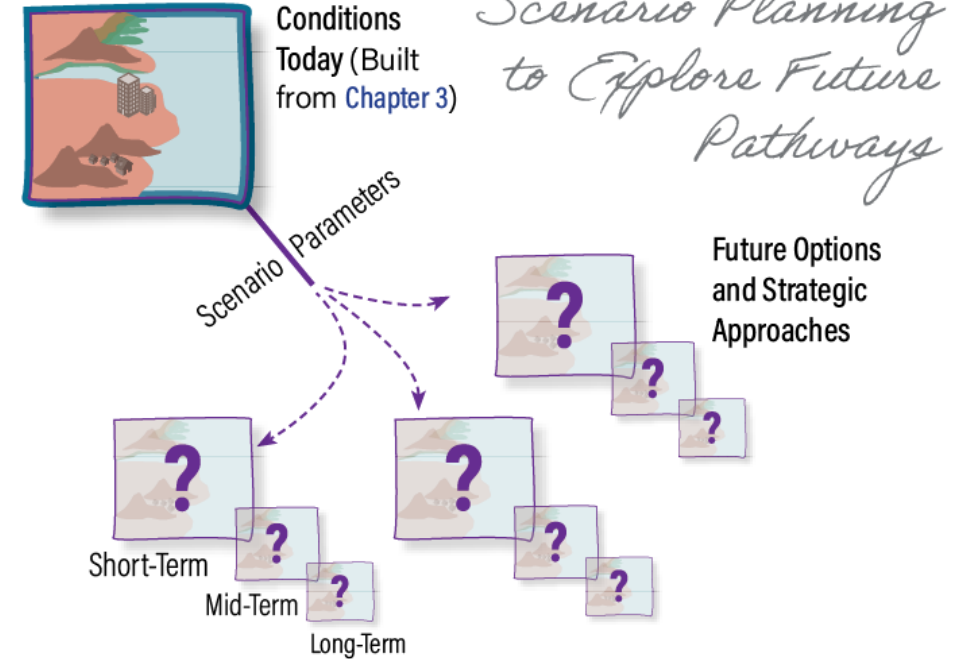


**Protect Shorelines**



**Accommodate  
the Water**

**Avoid or Retreat  
Developed Areas**



#### 4.1 Define the Problem

- 4.1.1 Risk Tolerance and Perception
- 4.1.2 Current Decision Context
- 4.1.3 Shared Problems to Respond To

#### 4.2 What Success Means

- 4.2.1 Vision
- 4.2.2 Guiding Principles
- 4.2.3 Evaluation Criteria

#### 4.3 Explore Future Scenarios

- 4.3.1 Scenarios as a Pathways Tool
- 4.3.2 Strategic Approaches
- 4.3.3 Scenario Planning Parameters
- 4.3.4 Conducting and Summarizing

#### 4.4 Outcomes and Expectations

- 4.4.1 Raising Difficult Topics
- 4.4.2 Future Decision Context
- 4.4.3 Advancing Scenarios

#### 4.5 Workbook 4

- [Download Workbook 4](#)
- 4.5 Use Workbook 4 Outcomes

Download  
Workbook 4

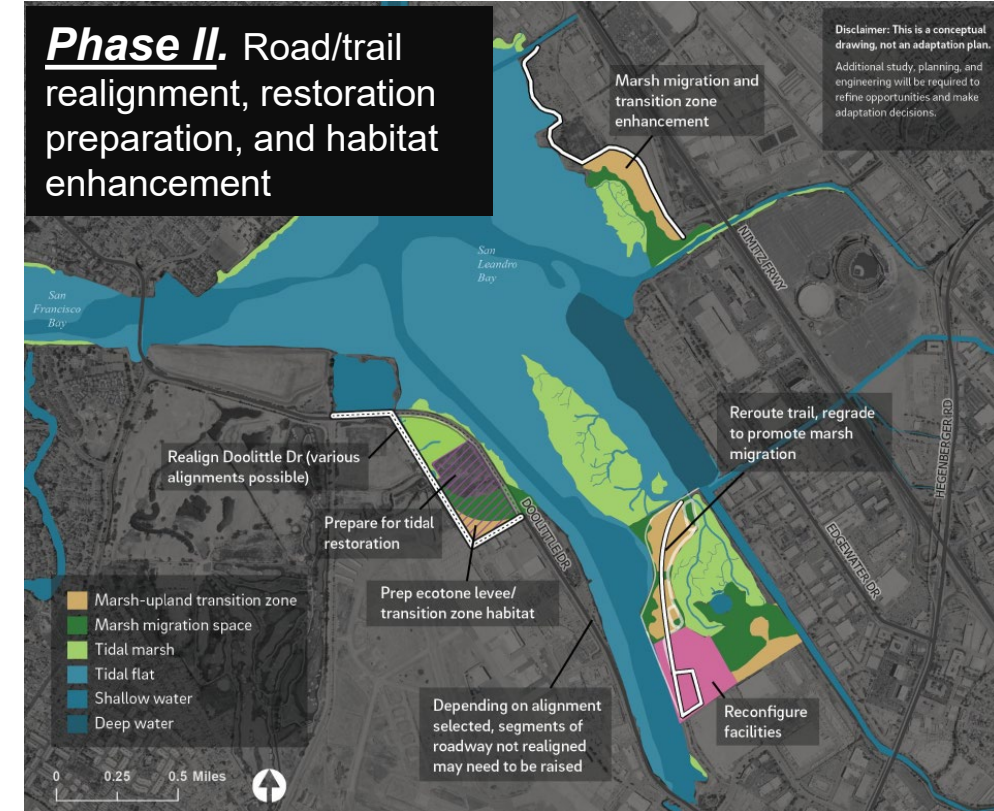
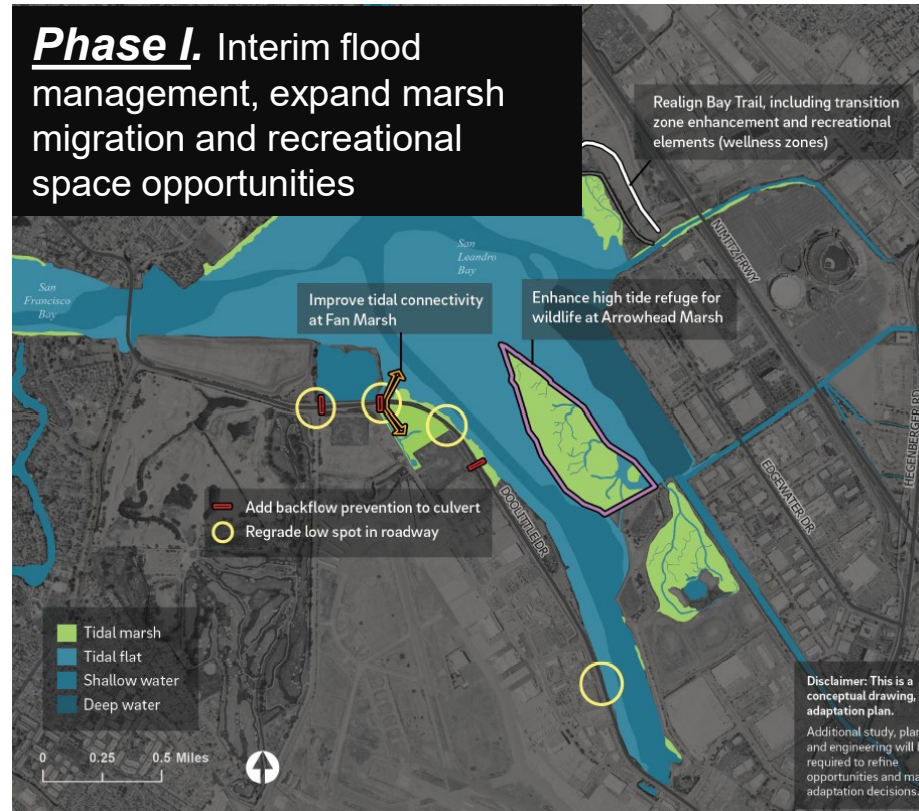


# Chapter 4. Shape a Shared Vision of the Future

## *In Practice*

### San Leandro/ Oakland/Alameda Estuary Working Group

#### Approach 2: Expand marsh migration space early



#### 4.1 Define the Problem

- 4.1.1 Risk Tolerance and Perception
- 4.1.2 Current Decision Context
- 4.1.3 Shared Problems to Respond To

#### 4.2 What Success Means

- 4.2.1 Vision
- 4.2.2 Guiding Principles
- 4.2.3 Evaluation Criteria

#### 4.3 Explore Future Scenarios

- 4.3.1 Scenarios as a Pathways Tool
- 4.3.2 Strategic Approaches
- 4.3.3 Scenario Planning Parameters
- 4.3.4 Conducting and Summarizing

#### 4.4 Outcomes and Expectations

- 4.4.1 Raising Difficult Topics
- 4.4.2 Future Decision Context
- 4.4.3 Advancing Scenarios

#### 4.5 Workbook 4

- Download Workbook 4
- 4.5 Use Workbook 4 Outcomes



# Chapter 5 Bring Together Shared Solutions

**Adaptation Roadmap**  
*Training Webinar*





# Chapter 5

## Bring Together Shared Solutions

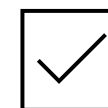


Chapter 5 supports bringing together all the pieces to **build adaptation strategies** that reflect community and stakeholders' concerns, are **bundled, phased, evaluated, and selected.**



**Well suited for:**

Practitioners on the Core Team and Key Partners should work with technical experts or consultants to apply adaptation strategies and engage with communities and stakeholders in decision-making.



**Chapter Workbook Outcomes:**

- ✓ Adaptation strategies for the short, medium, and long-term that are evaluated and decided upon

### 5.1 Explore Actions

5.1.1 Actions and Strategies  
5.1.2 Adaptation Action Types  
5.1.3 ART Adaptation Catalog

### 5.2 Bundled Strategies

5.2.1 Starting With the End in Mind  
5.2.2 Linking Plans and Programs  
5.2.3 Connecting to People  
5.2.4 Paying for Adaptation

### 5.3 Phasing and Sequencing

5.3.1 Action Lifespan and Time Horizons  
5.3.2 Sequencing and Lead Times  
5.3.3 Applying Triggers and Decision Points  
5.3.4 Visualizing Adaptation Pathways

### 5.4 Tradeoffs and Decisions

5.4.1 Share Results and Apply Evaluation Criteria  
5.4.2 Additional Evaluation Approaches  
5.4.3 Make Decisions on Adaptation

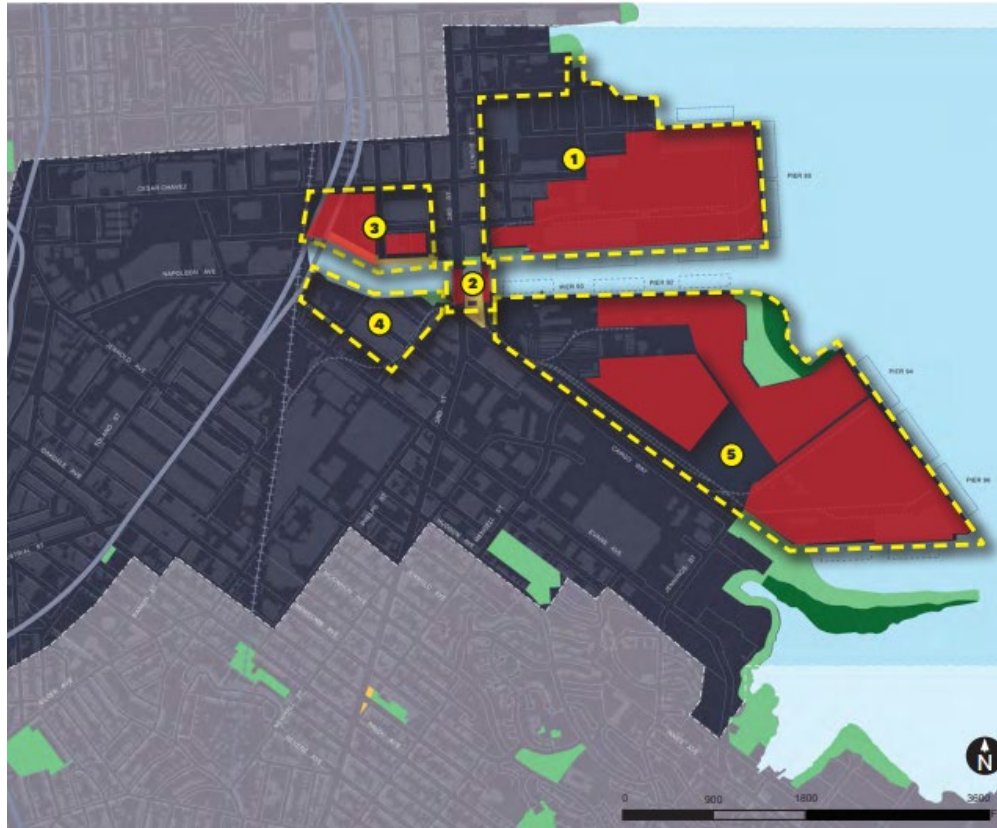
### 5.5 Workbook 5

[Download Workbook 5](#)  
5.5 Use Workbook 5 Outcomes

## Chapter 5. Bring Together Shared Solutions

### *In Practice*

#### Islais Creek Southeast Mobility Adaptation Strategy



#### 5 Reaches Grouping Adaptation Strategies

- Reach 1 - Northeastern Waterfront
- Reach 2 – Creek Channel Crossing
- Reach 3 – Northwestern Creek Bank
- Reach 4 – Southwestern Creek Bank
- Reach 5 – Southeastern Waterfront

<https://sfplanning.org/project/islais>

#### 5.1 Explore Actions

- 5.1.1 Actions and Strategies
- 5.1.2 Adaptation Action Types
- 5.1.3 ART Adaptation Catalog

#### 5.2 Bundled Strategies

- 5.2.1 Starting With the End in Mind
- 5.2.2 Linking Plans and Programs
- 5.2.3 Connecting to People
- 5.2.4 Paying for Adaptation

#### 5.3 Phasing and Sequencing

- 5.3.1 Action Lifespan and Time Horizons
- 5.3.2 Sequencing and Lead Times
- 5.3.3 Applying Triggers and Decision Points
- 5.3.4 Visualizing Adaptation Pathways

#### 5.4 Tradeoffs and Decisions

- 5.4.1 Share Results and Apply Evaluation Criteria
- 5.4.2 Additional Evaluation Approaches
- 5.4.3 Make Decisions on Adaptation

#### 5.5 Workbook 5

- [Download Workbook 5](#)
- 5.5 Use Workbook 5 Outcomes



# Chapter 5. Bring Together Shared Solutions

## *In Practice*

### Islais Creek Southeast Mobility Adaptation Strategy



Evaluated a range of different adaptation types

**ART Adaptation Catalog** as a database of adaptation actions:  
[http://www.adaptingtorisingtides.org/wp-content/uploads/2022/03/AdaptationRoadmap\\_ART\\_AdaptationCatalog\\_March\\_2022.xlsx](http://www.adaptingtorisingtides.org/wp-content/uploads/2022/03/AdaptationRoadmap_ART_AdaptationCatalog_March_2022.xlsx)

#### 5.1 Explore Actions

- 5.1.1 Actions and Strategies
- 5.1.2 Adaptation Action Types
- 5.1.3 ART Adaptation Catalog

#### 5.2 Bundled Strategies

- 5.2.1 Starting With the End in Mind
- 5.2.2 Linking Plans and Programs
- 5.2.3 Connecting to People
- 5.2.4 Paying for Adaptation

#### 5.3 Phasing and Sequencing

- 5.3.1 Action Lifespan and Time Horizons
- 5.3.2 Sequencing and Lead Times
- 5.3.3 Applying Triggers and Decision Points
- 5.3.4 Visualizing Adaptation Pathways

#### 5.4 Tradeoffs and Decisions

- 5.4.1 Share Results and Apply Evaluation Criteria
- 5.4.2 Additional Evaluation Approaches
- 5.4.3 Make Decisions on Adaptation

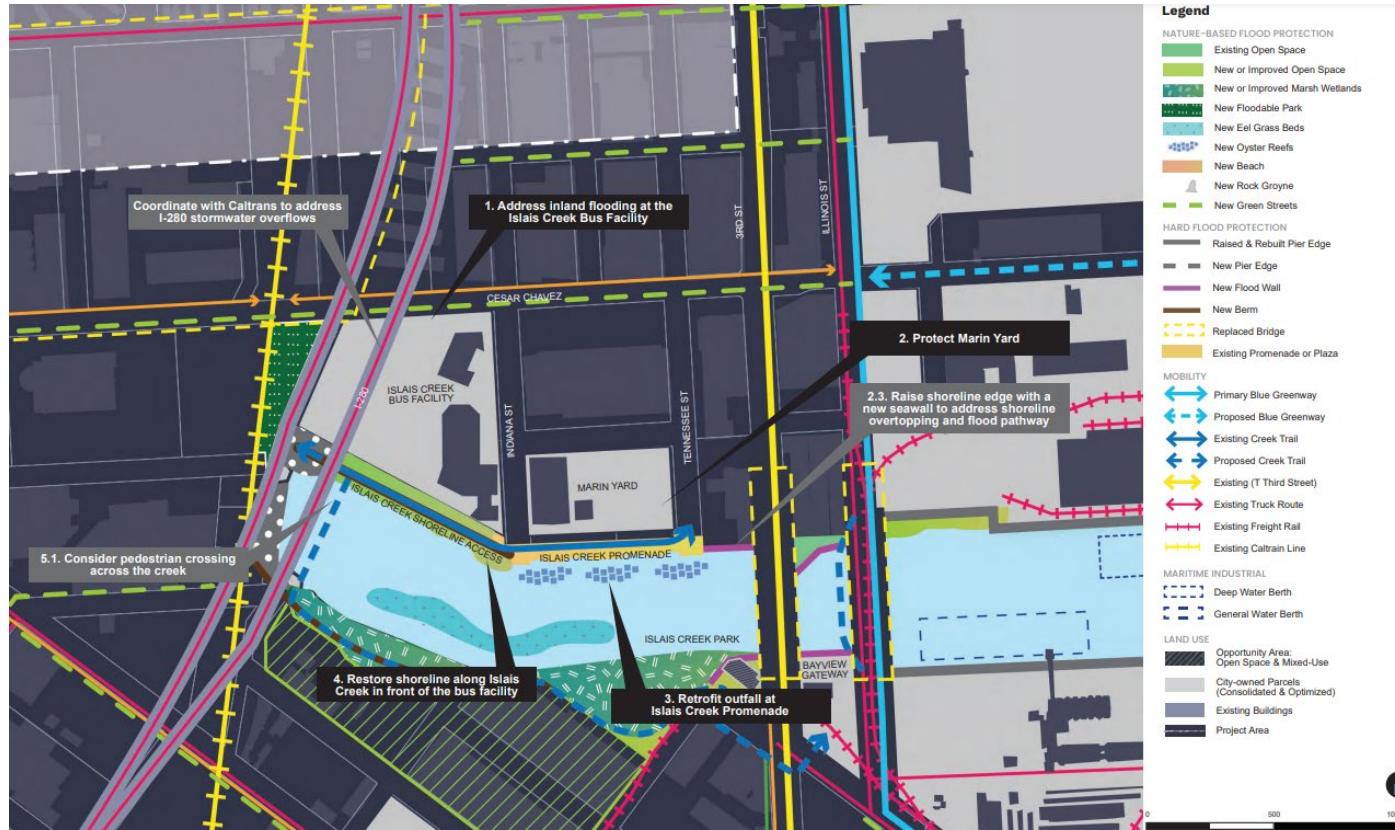
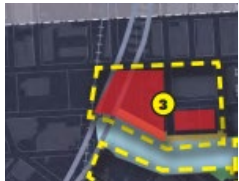
#### 5.5 Workbook 5

- [Download Workbook 5](#)
- 5.5 Use Workbook 5 Outcomes

# Chapter 5. Bring Together Shared Solutions

## In Practice

### Islais Creek Southeast Mobility Adaptation Strategy



### Reach 3 – Northwestern Creek Bank

Introduce flood protection measures at critical SFMTA facilities and enhance public access to the creek's shoreline.

Key assets include: Islais Creek Bus Facility (SFMTA) and Marin Yard (SFMTA)

#### 5.1 Explore Actions

- 5.1.1 Actions and Strategies
- 5.1.2 Adaptation Action Types
- 5.1.3 ART Adaptation Catalog

#### 5.2 Bundled Strategies

- 5.2.1 Starting With the End in Mind
- 5.2.2 Linking Plans and Programs
- 5.2.3 Connecting to People
- 5.2.4 Paying for Adaptation

#### 5.3 Phasing and Sequencing

- 5.3.1 Action Lifespan and Time Horizons
- 5.3.2 Sequencing and Lead Times
- 5.3.3 Applying Triggers and Decision Points
- 5.3.4 Visualizing Adaptation Pathways

#### 5.4 Tradeoffs and Decisions

- 5.4.1 Share Results and Apply Evaluation Criteria
- 5.4.2 Additional Evaluation Approaches
- 5.4.3 Make Decisions on Adaptation

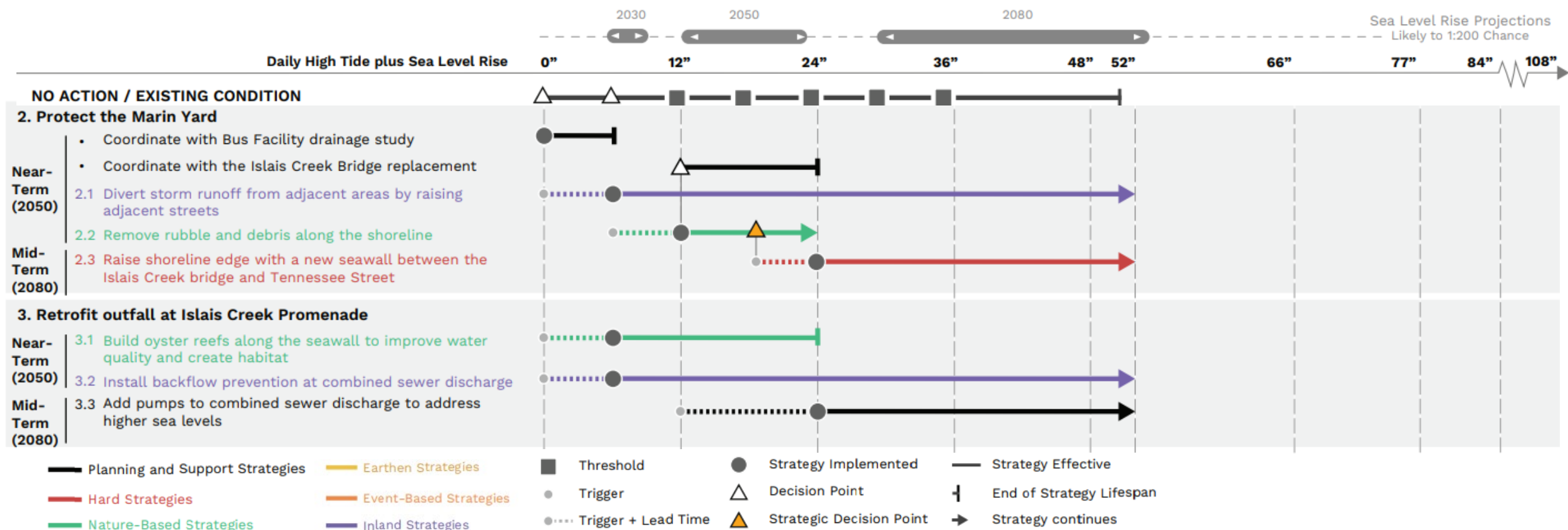
#### 5.5 Workbook 5

[Download Workbook 5](#)

5.5 Use Workbook 5 Outcomes



# Chapter 5. Bring Together Shared Solutions



## 5.1 Explore Actions

- 5.1.1 Actions and Strategies
- 5.1.2 Adaptation Action Types
- 5.1.3 ART Adaptation Catalog

## 5.2 Bundled Strategies

- 5.2.1 Starting With the End in Mind
- 5.2.2 Linking Plans and Programs
- 5.2.3 Connecting to People
- 5.2.4 Paying for Adaptation

## 5.3 Phasing and Sequencing

- 5.3.1 Action Lifespan and Time Horizons
- 5.3.2 Sequencing and Lead Times
- 5.3.3 Applying Triggers and Decision Points
- 5.3.4 Visualizing Adaptation Pathways

## 5.4 Tradeoffs and Decisions

- 5.4.1 Share Results and Apply Evaluation Criteria
- 5.4.2 Additional Evaluation Approaches
- 5.4.3 Make Decisions on Adaptation

## 5.5 Workbook 5

[Download Workbook 5](#)

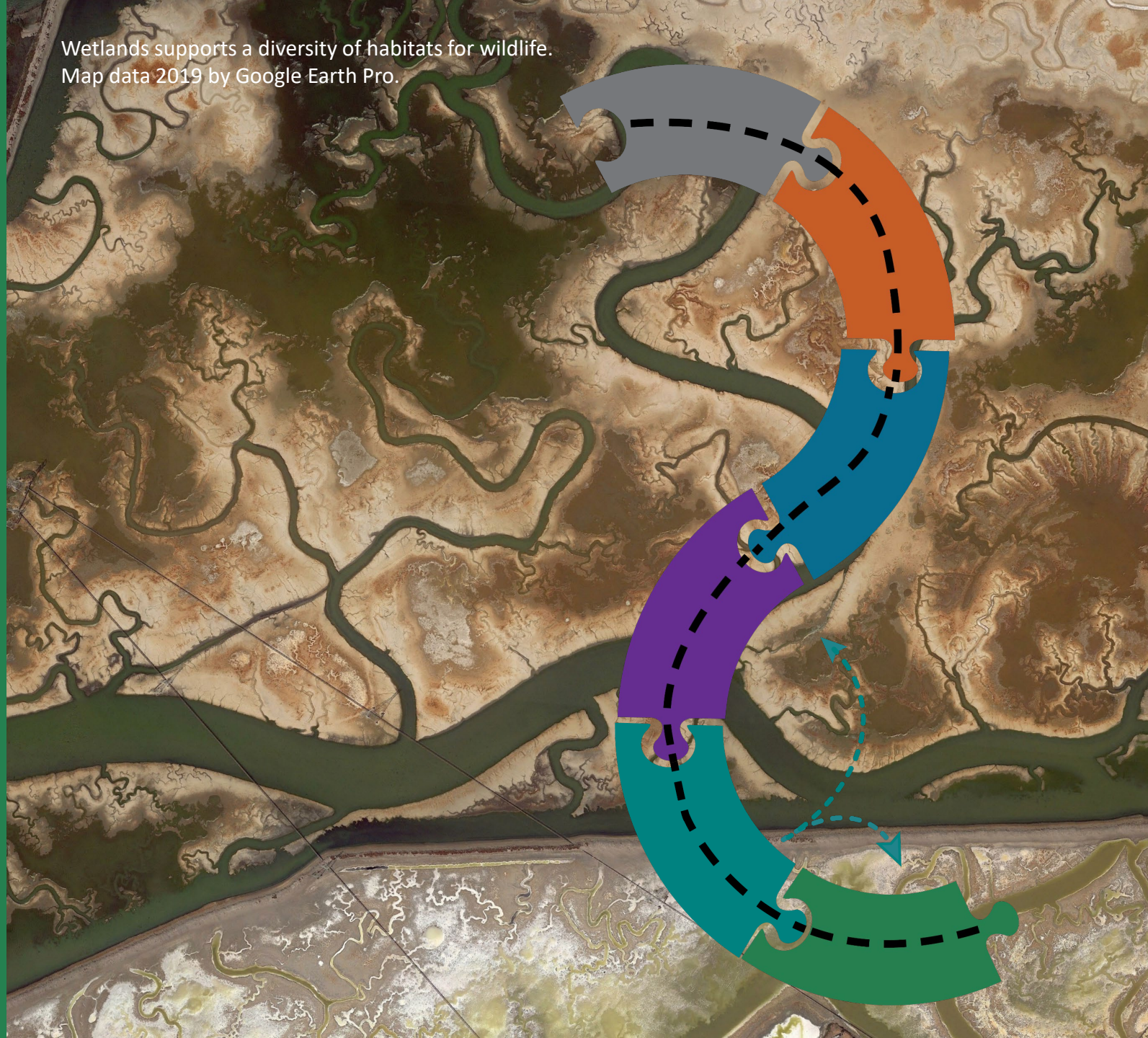
5.5 Use Workbook 5 Outcomes



# Chapter 6 Pathways Approach to Implementation

**Adaptation Roadmap**  
*Training Webinar Part III*

Wetlands supports a diversity of habitats for wildlife.  
Map data 2019 by Google Earth Pro.





## Chapter 6

# Pathways Approach to Implementation



Chapter 6 supports **advancing adaptation outcomes** through appropriate plans, processes, and people with an approach for **implementing next steps and monitoring** over time.



**Well suited for:**

**Practitioners on the Core Team and Key Partners** should advance adaptation outcomes with support from local champions with communities and stakeholder groups for implementation.



**Chapter Workbook Outcomes:**

- ✓ Adopted Adaptation Plan (or integrated into relevant plans)
- ✓ Implementation Work Plan

### 6.1 Link Strategies to Outcomes

6.1.1 Creating (Or Connecting To) Plans  
6.1.2 Connecting Processes and Projects  
6.1.3 Connecting People

### 6.2 Advance Near-Term Strategies

6.2.1 Implementation Work Plan  
6.2.2 Order of Implementation  
6.2.3 Sustaining Momentum

### 6.3 Prepare for Changes Over Time

6.3.1 Monitoring and Tracking  
6.3.2 Reacting to Changes  
6.3.3 Love Letter to the Future

### 6.4 Workbook 6

[Download Workbook 6](#)

6.4 Use Workbook 6 Outcomes

# Chapter 6. Pathways Approach to Implementation – *In Practice*



## 6.1 Link Strategies to Outcomes

- 6.1.1 Creating (Or Connecting To) Plans
- 6.1.2 Connecting Processes and Projects
- 6.1.3 Connecting People

## 6.2 Advance Near-Term Strategies

- 6.2.1 Implementation Work Plan
- 6.2.2 Order of Implementation
- 6.2.3 Sustaining Momentum

## 6.3 Prepare for Changes Over Time

- 6.3.1 Monitoring and Tracking
- 6.3.2 Reacting to Changes
- 6.3.3 Love Letter to the Future

## 6.4 Workbook 6

[Download  
Workbook 6](#)

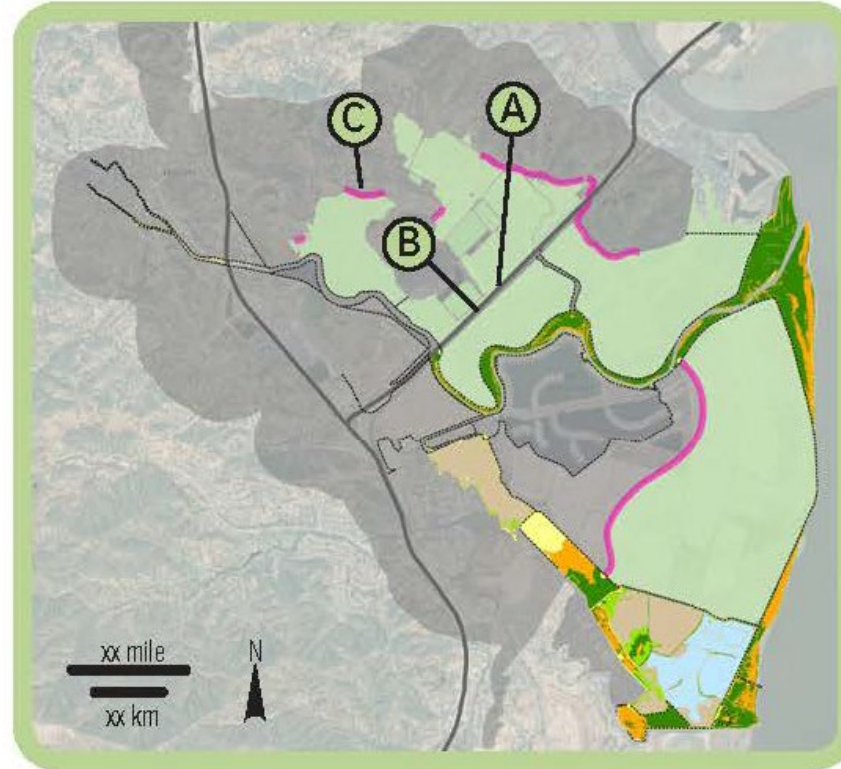
6.4 Use Workbook 6  
Outcomes



# Chapter 6. Pathways Approach to Implementation – *In Practice*

## Opportunities to “maximize habitat/minimize risk”:

- A** Reconnect baylands to tidal action by elevating Highway 37 onto a causeway
- B** Lengthen and raise Highway 37 bridge over Novato Creek
- C** Build ecotone levees between development and areas newly restored to tidal action



### 6.1 Link Strategies to Outcomes

- 6.1.1 Creating (Or Connecting To) Plans
- 6.1.2 Connecting Processes and Projects
- 6.1.3 Connecting People

### 6.2 Advance Near-Term Strategies

- 6.2.1 Implementation Work Plan
- 6.2.2 Order of Implementation
- 6.2.3 Sustaining Momentum

### 6.3 Prepare for Changes Over Time

- 6.3.1 Monitoring and Tracking
- 6.3.2 Reacting to Changes
- 6.3.3 Love Letter to the Future

### 6.4 Workbook 6

[Download Workbook 6](#)

6.4 Use Workbook 6 Outcomes



# Chapter 6. Pathways Approach to Implementation - *In Practice*

## Adaptation Roadmap *Training Webinar*



### 6.1 Link Strategies to Outcomes

- 6.1.1 Creating (Or Connecting To) Plans
- 6.1.2 Connecting Processes and Projects
- 6.1.3 Connecting People

### 6.2 Advance Near-Term Strategies

- 6.2.1 Implementation Work Plan
- 6.2.2 Order of Implementation
- 6.2.3 Sustaining Momentum

### 6.3 Prepare for Changes Over Time

- 6.3.1 Monitoring and Tracking
- 6.3.2 Reacting to Changes
- 6.3.3 Love Letter to the Future

### 6.4 Workbook 6

Download  
Workbook 6

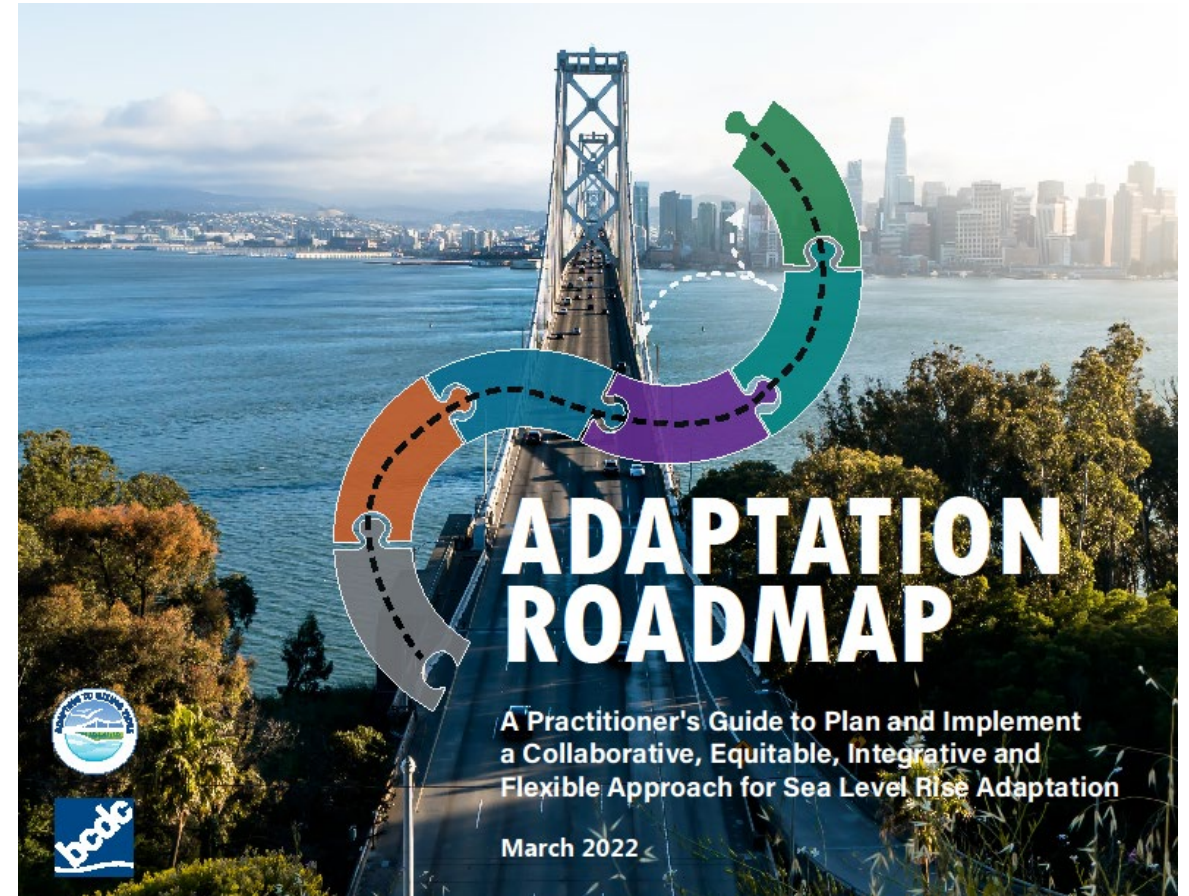
6.4 Use Workbook 6  
Outcomes



# Interested in Using the Adaptation Roadmap?

**Adaptation Roadmap**  
*Training Webinar*

- Fully linkable PDF available for [download now](#) and designed for easy navigation with corresponding workbooks
- There is a [two-page overview](#)
- This webinar will be posted online (shortly)
- Quick-reference guides (in development)
- Happy to schedule follow-up trainings individually or deeper dives on topics/chapters if requested  
([Jaclyn.Mandoske@bcdc.ca.gov](mailto:Jaclyn.Mandoske@bcdc.ca.gov))



[www.adaptingtorisingtides.org/projects/adaptation-roadmap](http://www.adaptingtorisingtides.org/projects/adaptation-roadmap)

# Adaptation Roadmap Training Webinar

**Audience Q&A**

