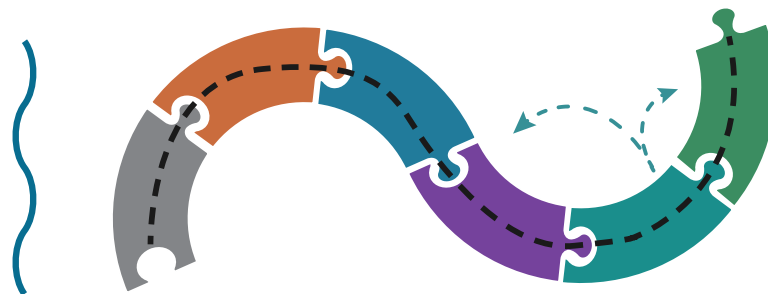


# ADAPTATION ROADMAP



## A Practitioner's Guide to Plan and Implement a Collaborative, Equitable, Integrative, and Flexible Approach for Sea Level Rise Adaptation

### De-mystifying Sea Level Rise Adaptation

For those who have completed a sea level rise vulnerability assessment, adaptation planning can seem *overwhelming*. It can be daunting to think about how to solve the many interconnected, complex, often large-scale challenges associated with the scale and magnitude of the problem. The Adaptation Roadmap addresses the following challenges:

- Involving *multiple different stakeholders, sectors, and communities*;
- Navigating the complex *landscape of decision-making*;
- Addressing *historic inequities and injustice*;
- Re-building *community trust and capacity*; and
- Making *decisions today in the face of uncertainty* for both future climate impacts and our societal choices.

- The Adaptation Roadmap provides a **six-chapter organizational framework** with corresponding workbooks to navigate the key components of sea level rise adaptation to collaboratively develop equitable outcomes now and into the future.



### A Practitioner Handbook For:



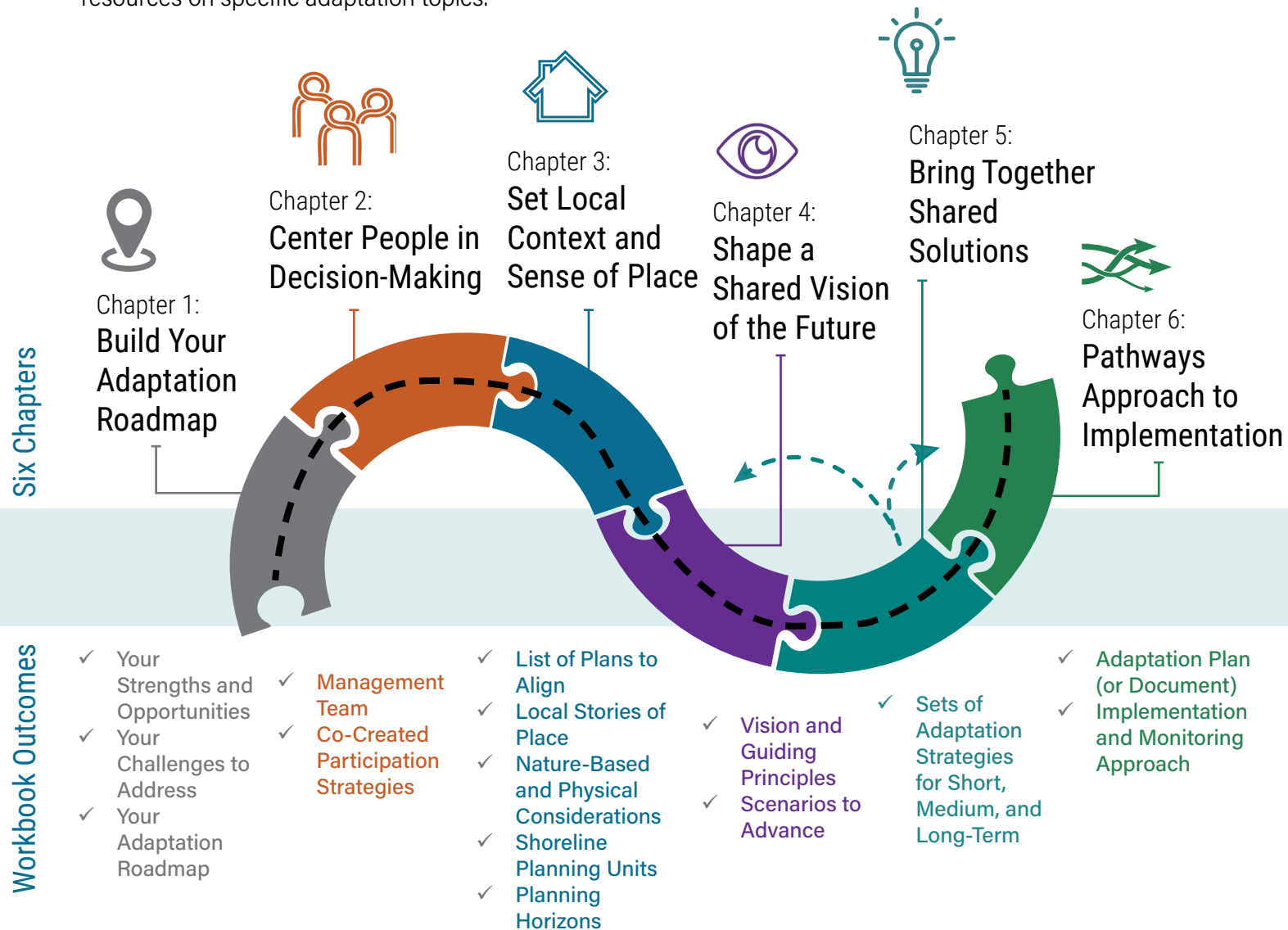
Local Government Staff  
Community-Based Organizations  
Non-Governmental Organizations  
Tribal Governments  
Special Districts  
Consultants

Learn more at [www.adaptingtorisingtides.org/projects/adaptation-roadmap](http://www.adaptingtorisingtides.org/projects/adaptation-roadmap)

## Towards Shared Adaptation Outcomes

The Adaptation Roadmap can be used in full or in part, depending on the outcomes you want to achieve. Each chapter includes a corresponding Workbook to guide decision-making and provide space to build upon your effort as you go. It is designed to be an easy-to-navigate resource that provides both a big picture overview of the key components of sea level rise adaptation, and access to in-depth guidance and resources on specific adaptation topics.

*The Adaptation Roadmap unravels the complex strings of sea level rise adaptation to demystify its challenges and guide your journey to solutions.*



Learn more at [www.adaptingtorisingtides.org/projects/adaptation-roadmap](http://www.adaptingtorisingtides.org/projects/adaptation-roadmap)