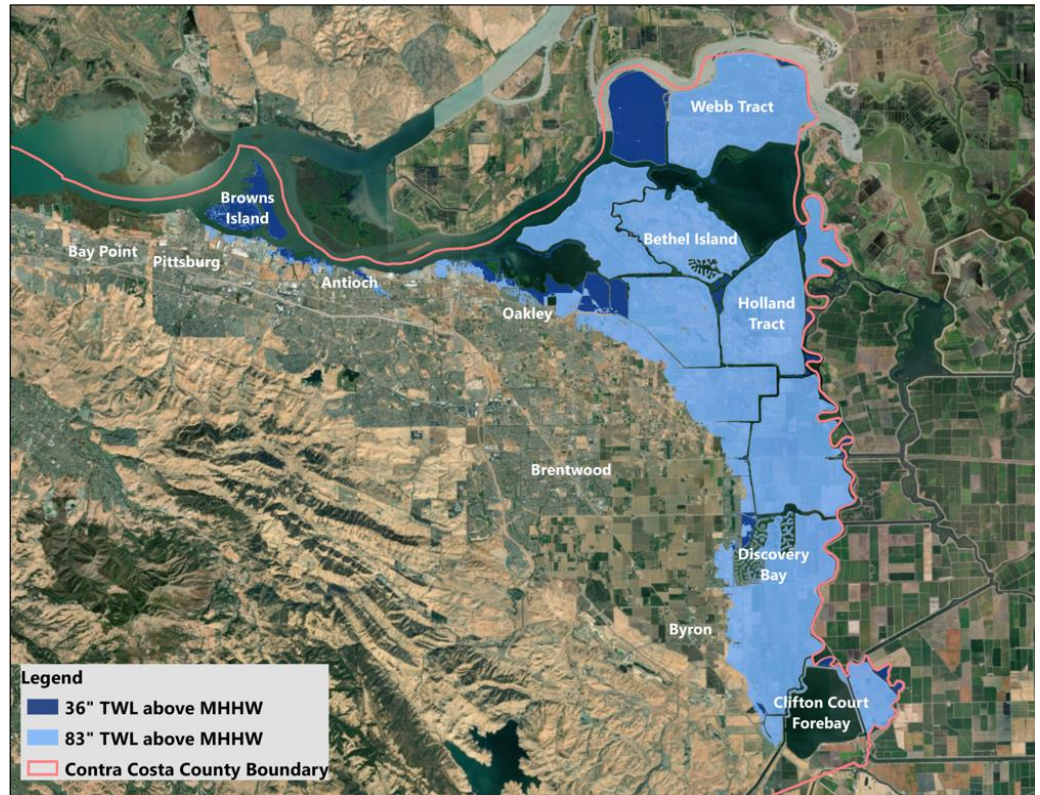


# Adapting to Rising Tides



## East Contra Costa Adapting to Rising Tides Project

Climate change will have profound impacts on Bay and Delta communities, economic sustainability, and ecology. The *Adapting to Rising Tides* (ART) program is helping increase preparedness and resilience by providing assistance to local governments and working with regional partners to identify and respond to the potential impacts of sea level rise and storm events. Based on strong demonstrated local interest, the ART program is convening a shoreline adaptation planning project that includes the Contra Costa County shoreline extending from Pittsburg to Clifton Court.



Using the ART adaptation planning process, tools, and data, ART staff will work collaboratively with the Delta Stewardship Council, local jurisdictions, agencies, communities and organizations in Contra Costa County to understand the vulnerabilities and consequences they may face. This includes the disproportionate impacts certain community members may experience, the disruption of transportation and utility infrastructure, the loss of employment sites, and limitations on access to goods and services. The project will identify shared and individual actions that will help improve resilience to sea level rise and other climate change impacts. Implementing the findings of the project will be an ongoing process of continued engagement and partnership building, but the goal is for this project to result in a clear roadmap for adaptation in East Contra Costa.



## Sectors and Asset Categories Included

The East Contra Costa ART project will include multiple sectors and asset categories.

Sector	Asset Category
Communities	Social Vulnerability Ranks and Characteristics
	In-Delta Legacy Communities
	Residential Housing
	Single and multi-family, senior, dependent housing
Critical Facilities and Services	Public health infrastructure
	Emergency facilities and services
	Community facilities
	Waste collection and transfer stations
	Schools
Business and Industry	Industrial land uses
	Hazardous Materials Sites
	Commercial Land Uses
Parks and Recreation Facilities	Shoreline parks
	Water Trail Sites
	Marinas
	Fishing piers
Flood Control	Levees
	Stormwater infrastructure
	Shoreline Protection
Water Supply	Delta Intake Structures
	Canals
	Islands/Tracts important for conveyance
	Pumps and Diversions
	Drinking Water Intakes
	Aqueducts
	Water Facilities
Active Wells	
Wastewater Treatment	Wastewater Treatment Facilities
Transportation	Passenger and freight rail
	Local, state and interstate roads
	Marine terminals
	Airports
Energy and Fuel Supply	Pipelines
	Power generation
	Power distribution (substations)
Open Space and Natural Lands	Agricultural Lands
	Habitats
	Wildlife Refuges and Ecological Preserves

