

Adapting to Rising Tides

Bay Area

Regional Working Group Meeting #4

SFEI Offices

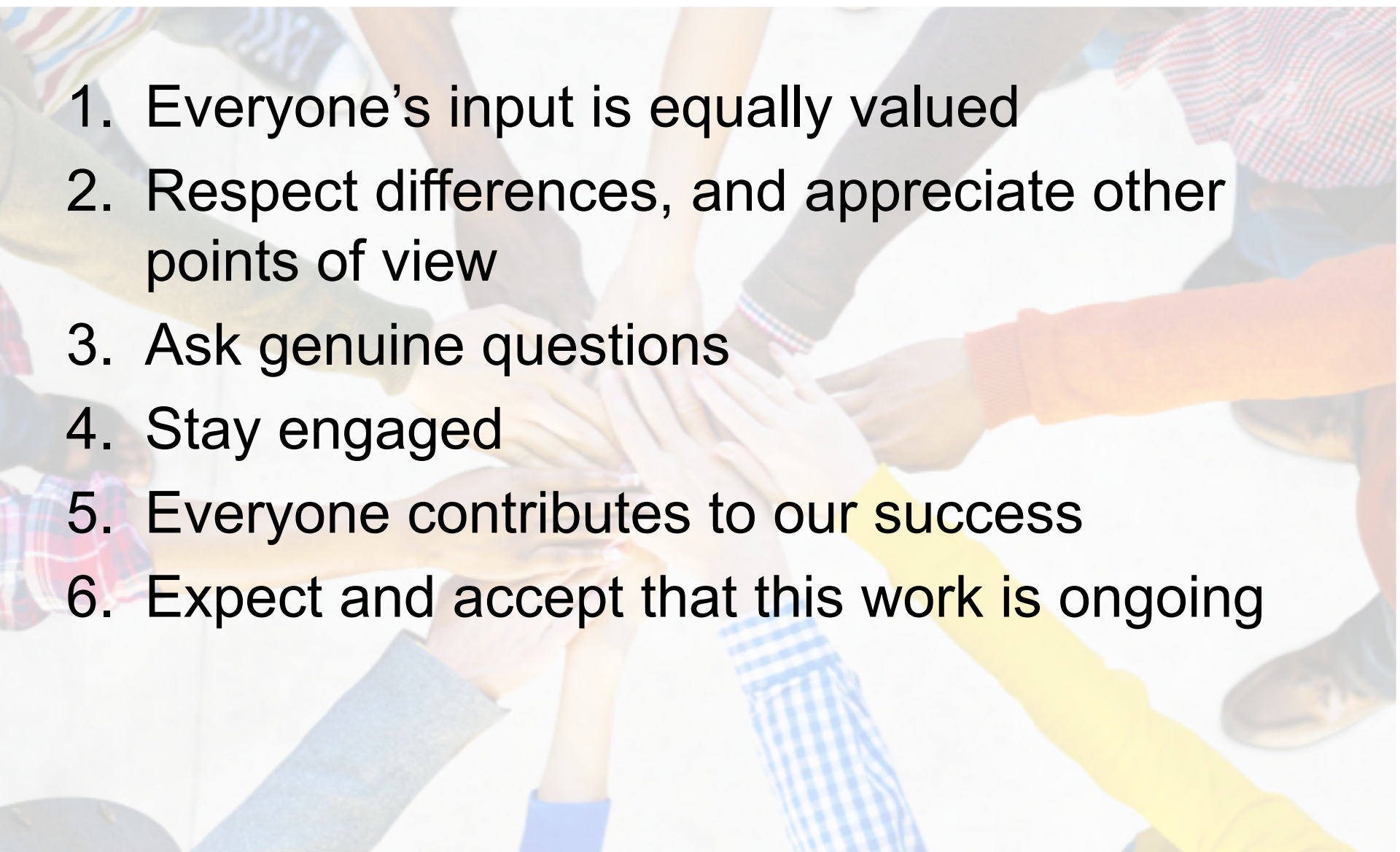
June 19, 2018



Bay Area
**Regional
Collaborative**

Working Group Ground Rules

ART Bay
Area

- 
1. Everyone's input is equally valued
 2. Respect differences, and appreciate other points of view
 3. Ask genuine questions
 4. Stay engaged
 5. Everyone contributes to our success
 6. Expect and accept that this work is ongoing

Agenda

ART Bay
Area

9:00 Presentation: background and vulnerability assessment

9:20 Presentation: OLUs

9:35 Presentation: vulnerability assessment results

15 min stretch break

10:05 Exercise: Identifying shared vulnerabilities + report out

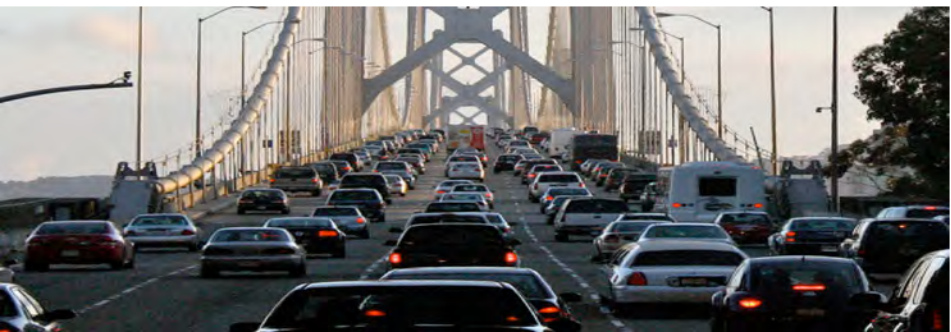
11:05 Presentation: Natural Capital Project analysis

11:20 Presentation: RISER SF Bay

11:45 Wrap-up and Next Steps

Project Partners

- Agency staff
 - Caltrans (funder, along with BATA)
 - MTC (grant recipient)
 - BARC (project manager)
 - BCDC ART team
- Consultant team
 - AECOM
 - Natural Capital
- Stakeholders
 - Regional Working Group
 - Public



Focus Areas

ART Bay
Area

Transportation infrastructure



Priority Development Areas (PDAs)



Vulnerable Communities

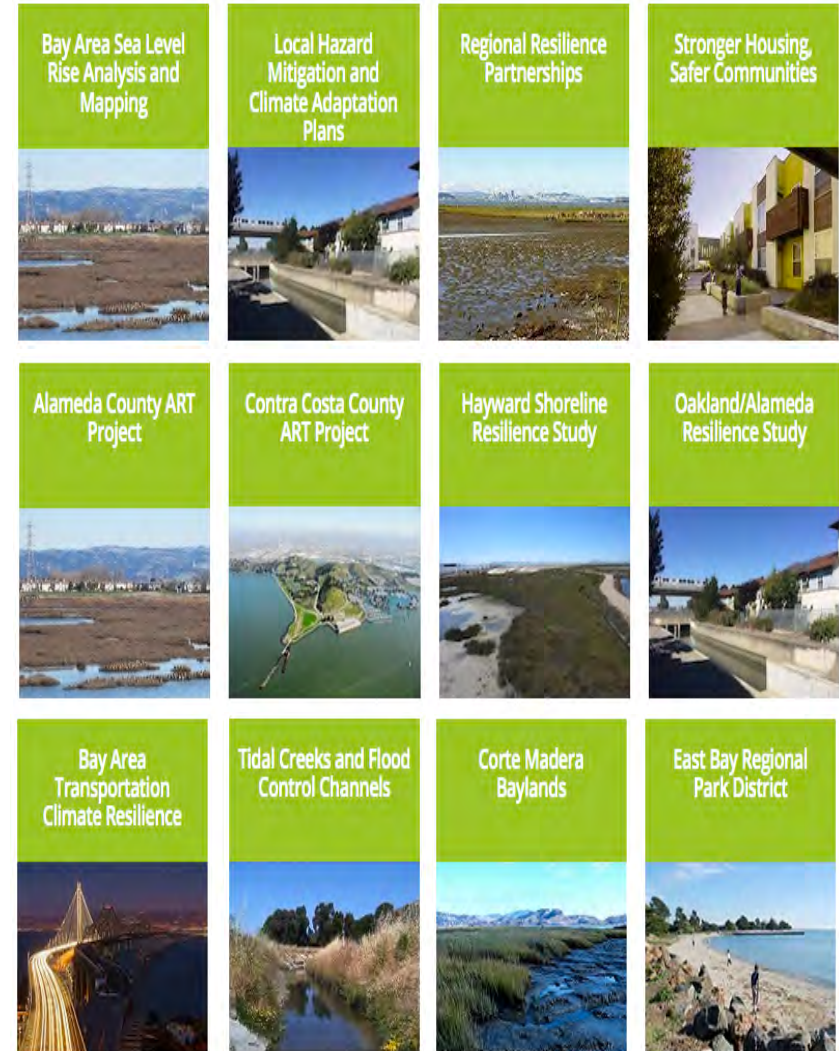


Priority Conservation Areas (PCAs)



Leverage completed/ongoing projects

- Previous ART projects
- *Stronger Housing, Safer Communities*
- Marin BayWAVE
- Sea Change San Mateo
- San Francisco SLR Action Plan
- Silicon Valley 2.0
- Coastal Conservancy's Climate Programs
- Baylands Ecosystem Habitat Goals Update
- And many more!



Project Goals

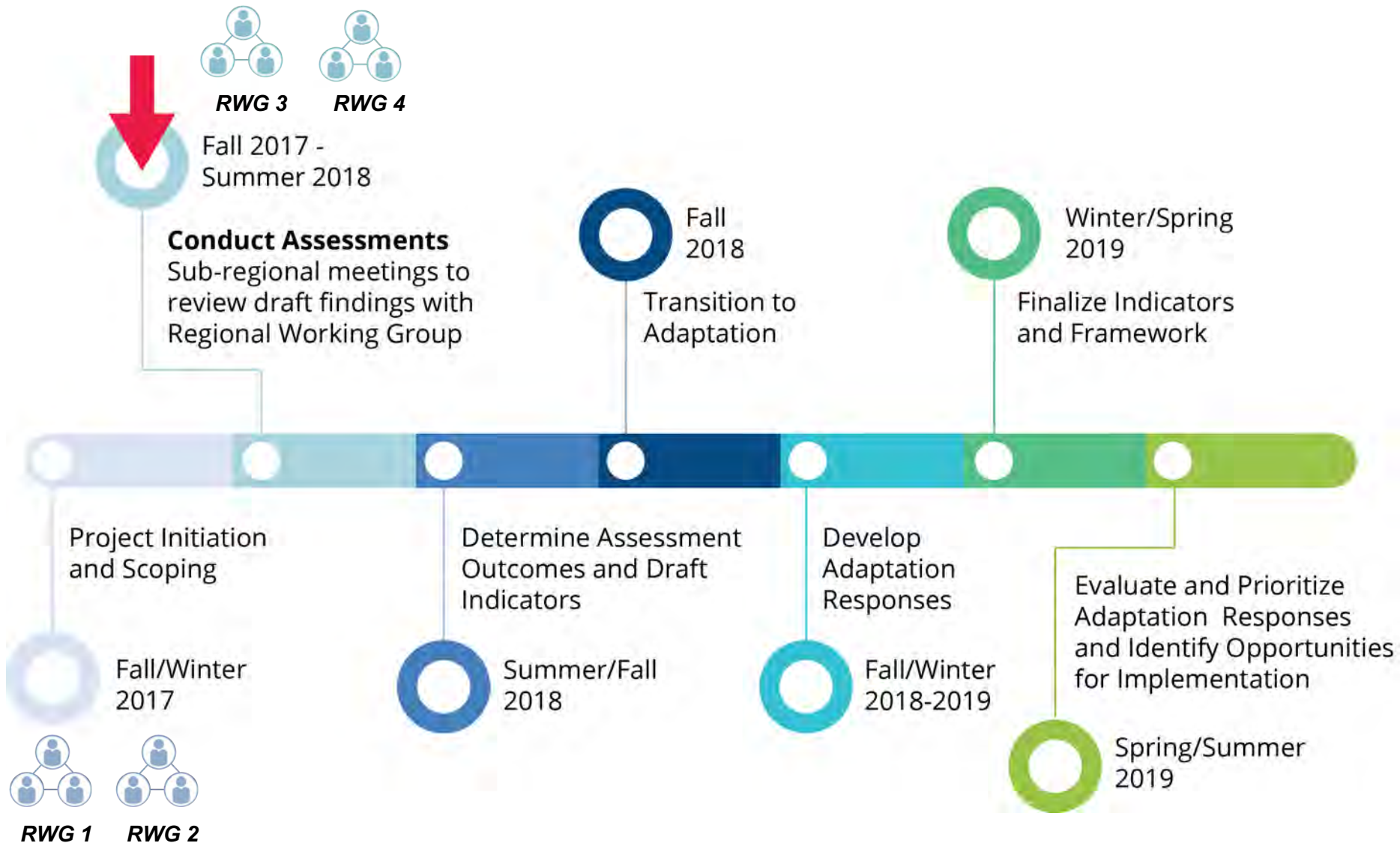
ART Bay
Area

- Complete comprehensive regional-scale vulnerability assessment
- Establish framework for ongoing regional-scale adaptation planning
- Increase public participation and local capacity to engage in planning and implementation over long term
- Coordinate with partners to apply project results to related efforts, such as MTC's Horizon effort and the 2021 update of Plan Bay Area



Project Timeline

ART Bay Area



Project Timeline – Assessments

ART Bay
Area



Fall 2017 -
Summer 2018

Conduct Assessments

Sub-regional meetings to review draft findings with Regional Working Group



Basic Vulnerability Assessment method:

- Select individual assets to assess
- Complete vulnerability assessment questionnaires
- Interview asset managers and other experts
- Synthesize outcomes
- Use framework to rank the most critical vulnerabilities to address in adaptation planning phase

Project Timeline – Assessments

ART Bay
Area



Fall 2017 -
Summer 2018

Conduct Assessments

Sub-regional meetings to review draft findings with Regional Working Group

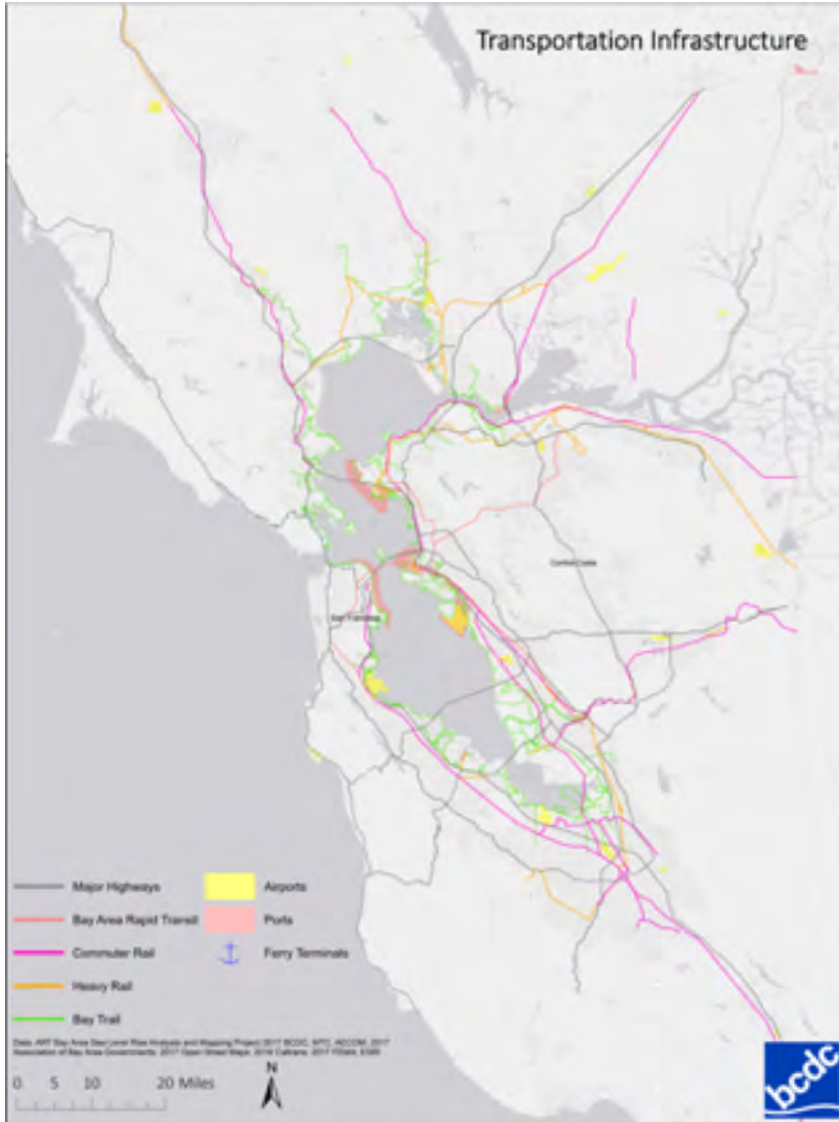


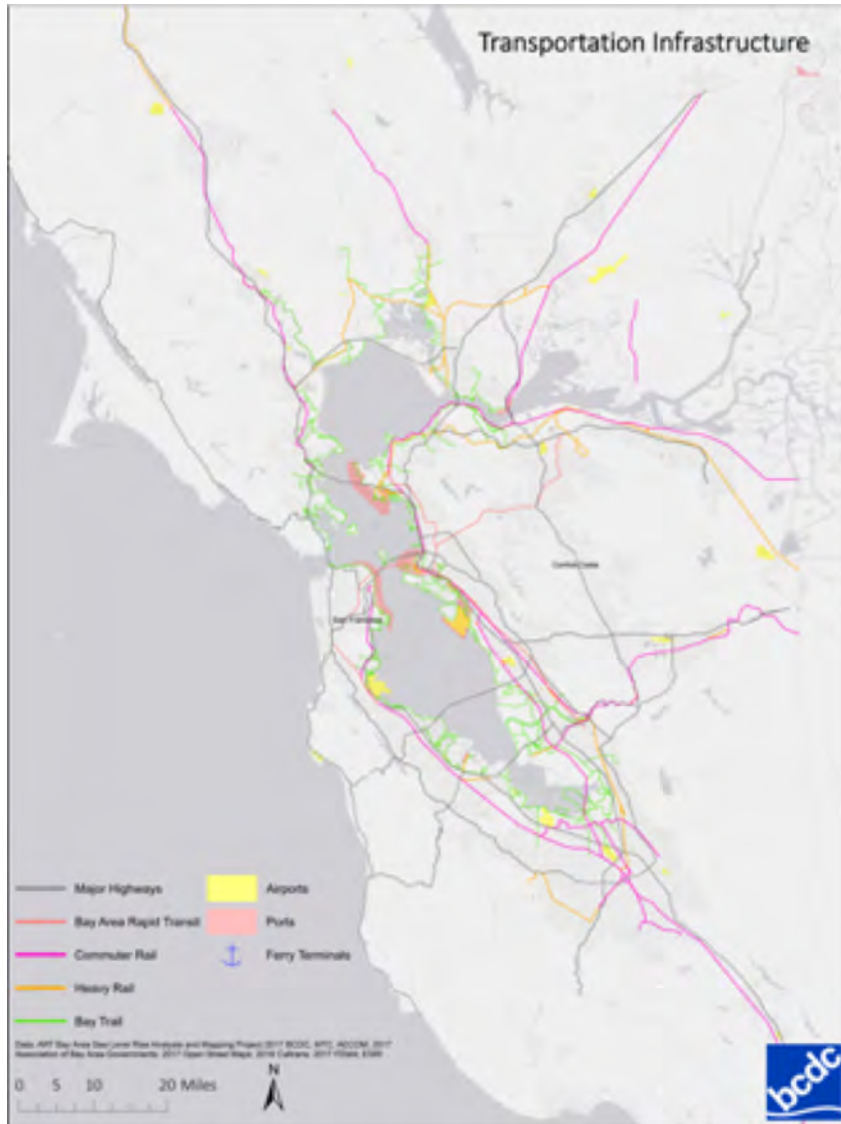
Basic Vulnerability Assessment method:

- Select individual assets to assess
- Complete vulnerability assessment questionnaires
- Interview asset managers and other experts
- Synthesize outcomes
- Use framework to rank the most critical vulnerabilities to address in adaptation planning phase

Transportation

ART Bay Area





- Covering major categories of transportation infrastructure
- Focusing on disruptions to the region that can occur from flood impacts
- Coordinating with related efforts, e.g., Caltrans District 4, MTC ABAG Travel model, Mark Stacey's work

Priority Conservation Areas (PCA)

ART Bay Area



Priority Conservation Areas (PCA)

ART Bay
Area

- Answering regional questions about PCA program goals
- Coordinating with PCA Program staff
- Researching a representative subset of PCAs
- Partnering with NatCap



Priority Development Areas (PDA)

ART Bay Area



Priority Development Areas (PDA)

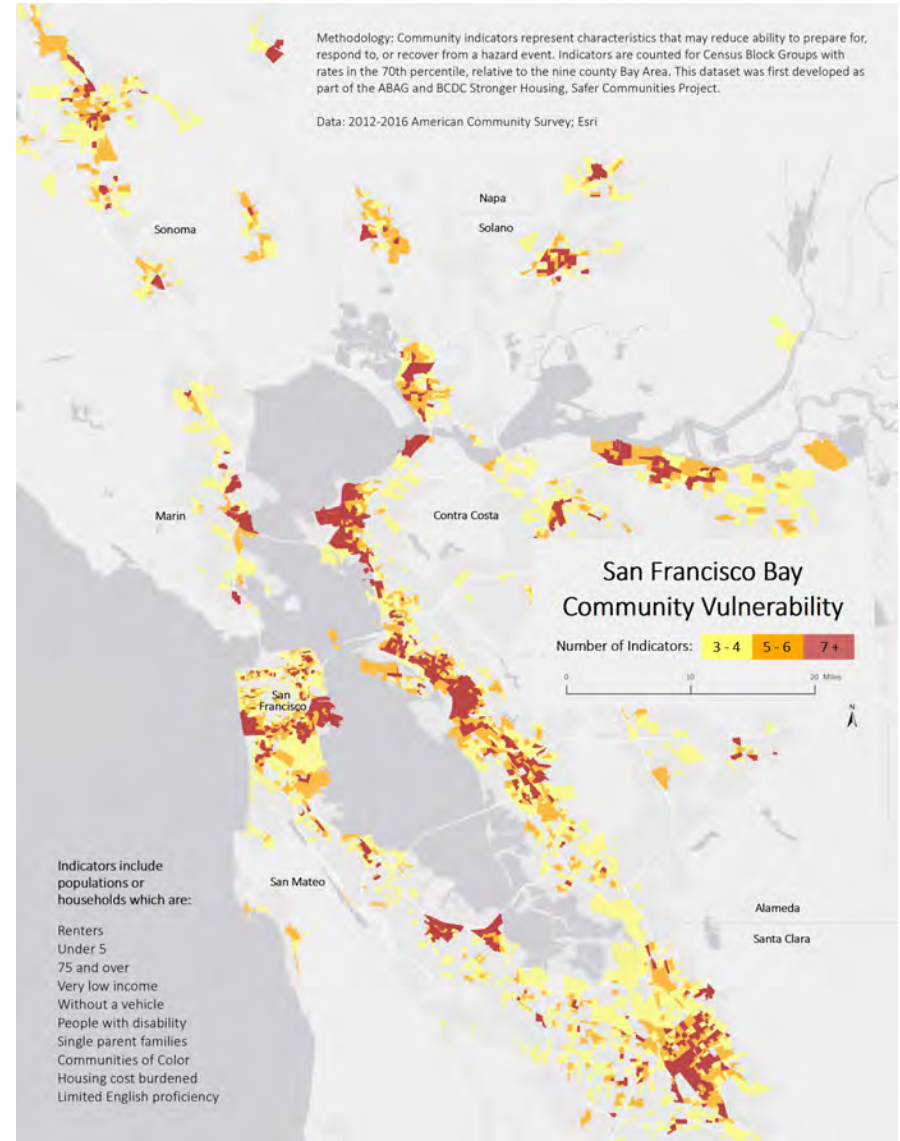
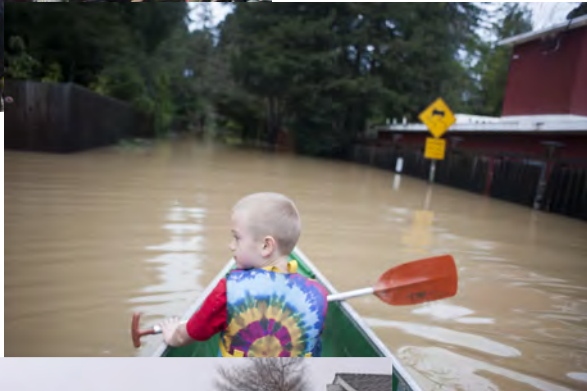
ART Bay Area



- Coordinating closely with MTC Horizon effort
- Researching subset of PDAs that score highly in MTC's analysis against PDA program goals

Vulnerable Communities

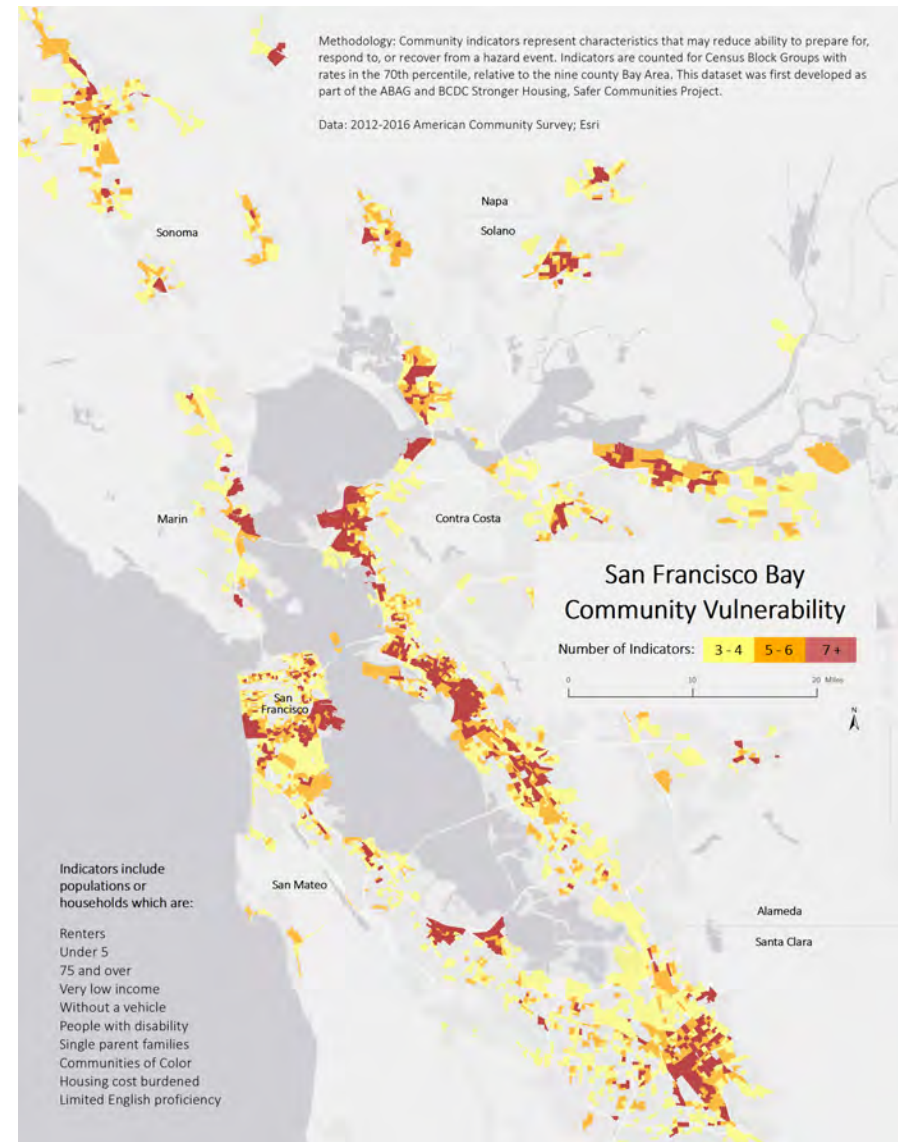
ART Bay Area



Vulnerable Communities

ART Bay
Area

- Selected communities with characteristics that reduce ability to prepare for and respond to flooding
 - Social vulnerability indicators
 - Highest land contamination score
 - Overlap with complementary community vulnerability screening tools




ART Bay Area

Case studies on transportation, PCAs, PDAs, and communities

 =
Transportation
Assets

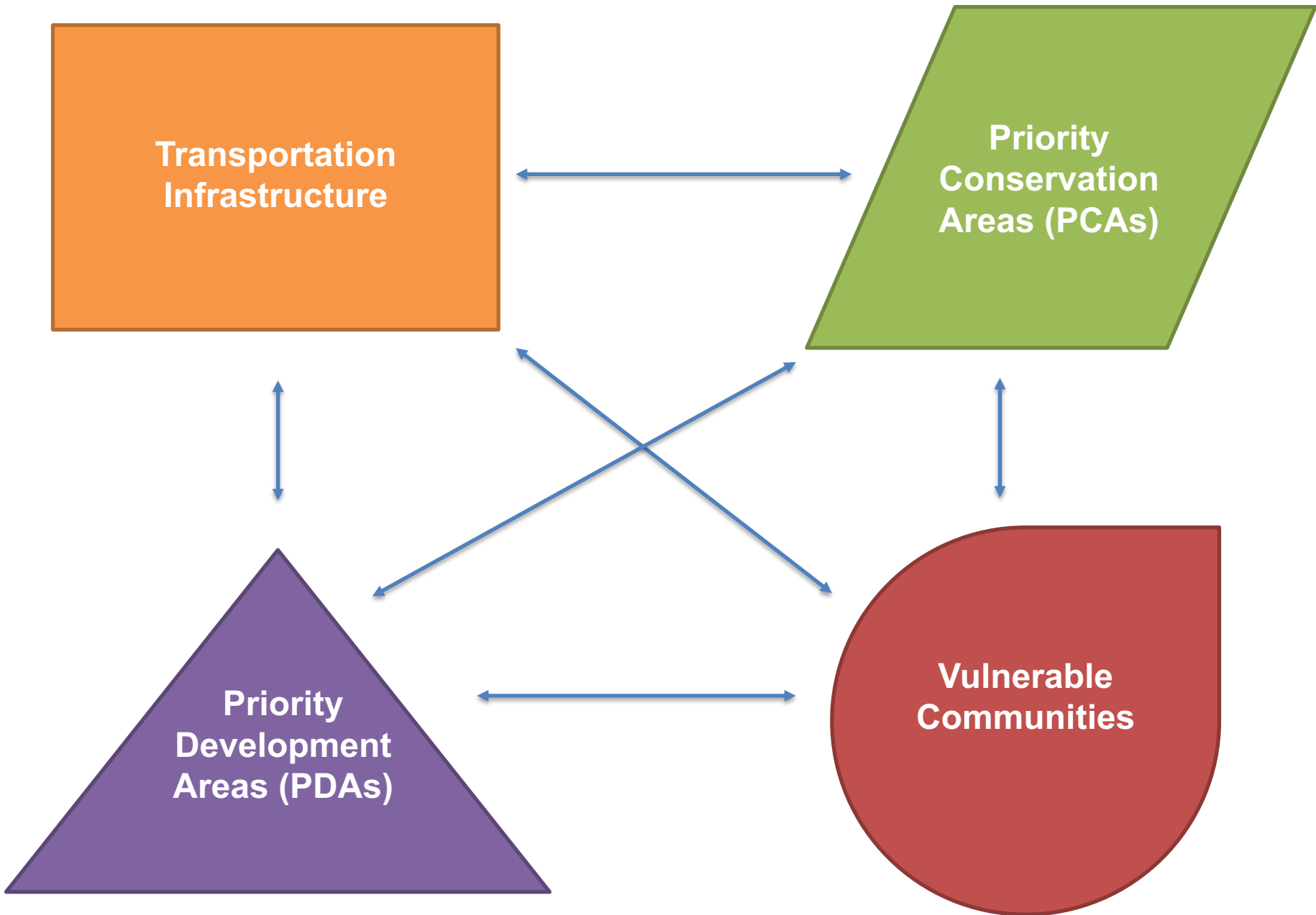
 =
PDA Assets

 =
PCA Assets

 =
Vulnerable
Communities
Assets








How can we best organize our results to best illustrate the interconnected nature of assets, and the significance of potential flood impacts to the region?

ART Bay Area

Case studies on transportation, PCAs, PDAs, and communities

 =
Transportation
Assets

 =
PDA Assets

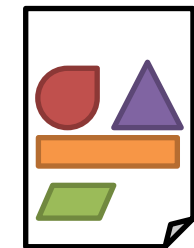
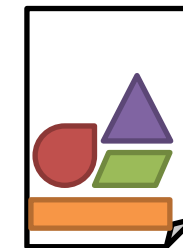
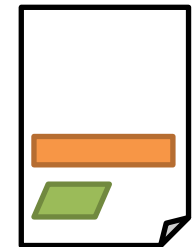
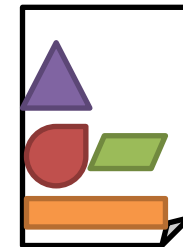
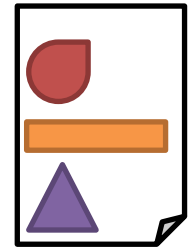
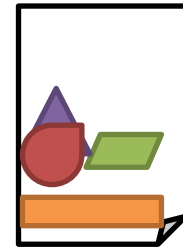
 =
PCA Assets

 =
Vulnerable
Communities
Assets



ART Bay Area

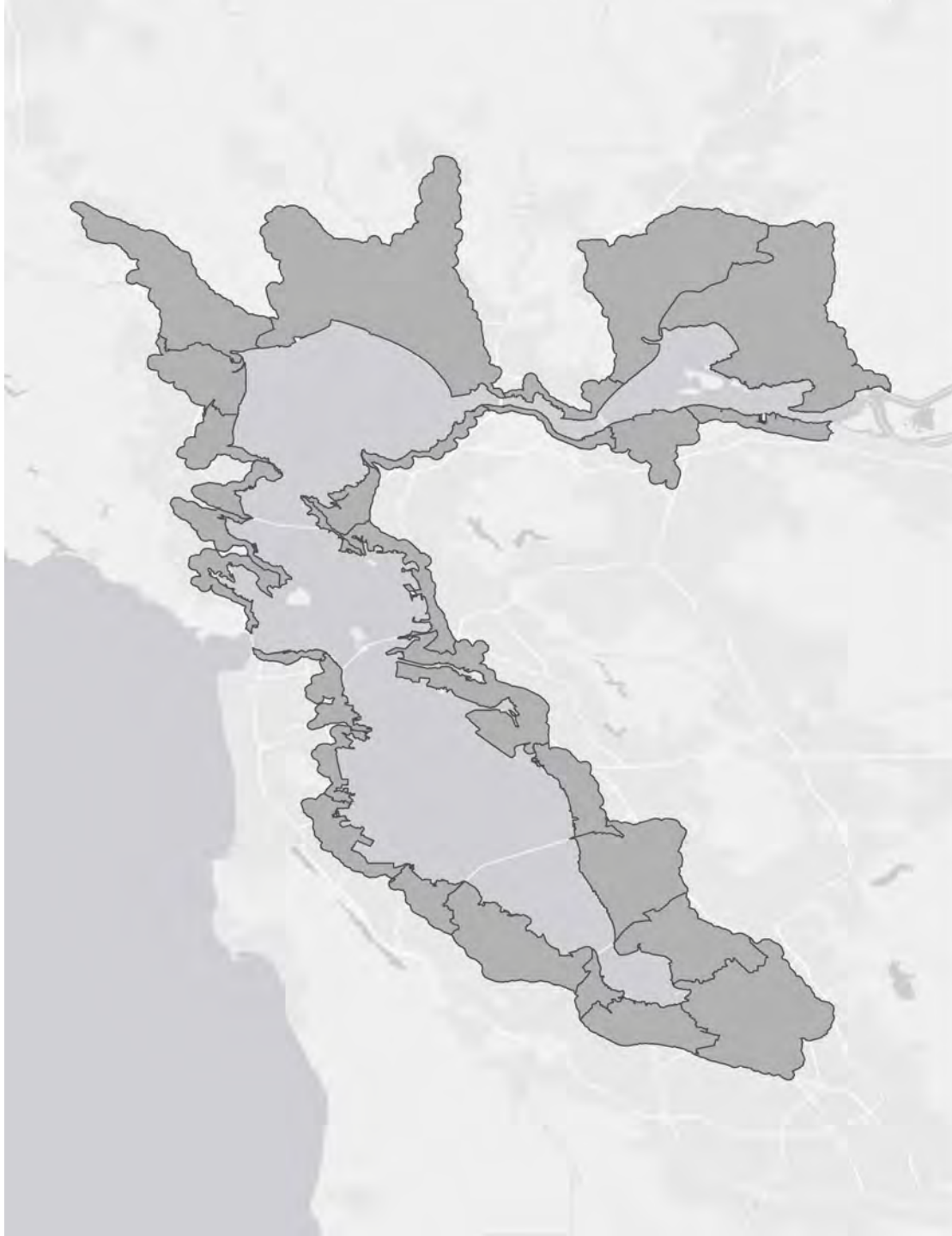
Case studies on the interrelated assets within a geographic unit



Organizing vulnerability assessment results by geographic units:

- Allows us to highlight connections between assets
- Avoids talking about assets in silos
- Illustrates the various parties that could come together to implement solutions
- Allows us to examine more than just our 4 asset categories
- Sets us up to identify sets of problems that can be solved by single adaptation solutions
- Suits the goal of this project to identify regionally significant adaptation strategies





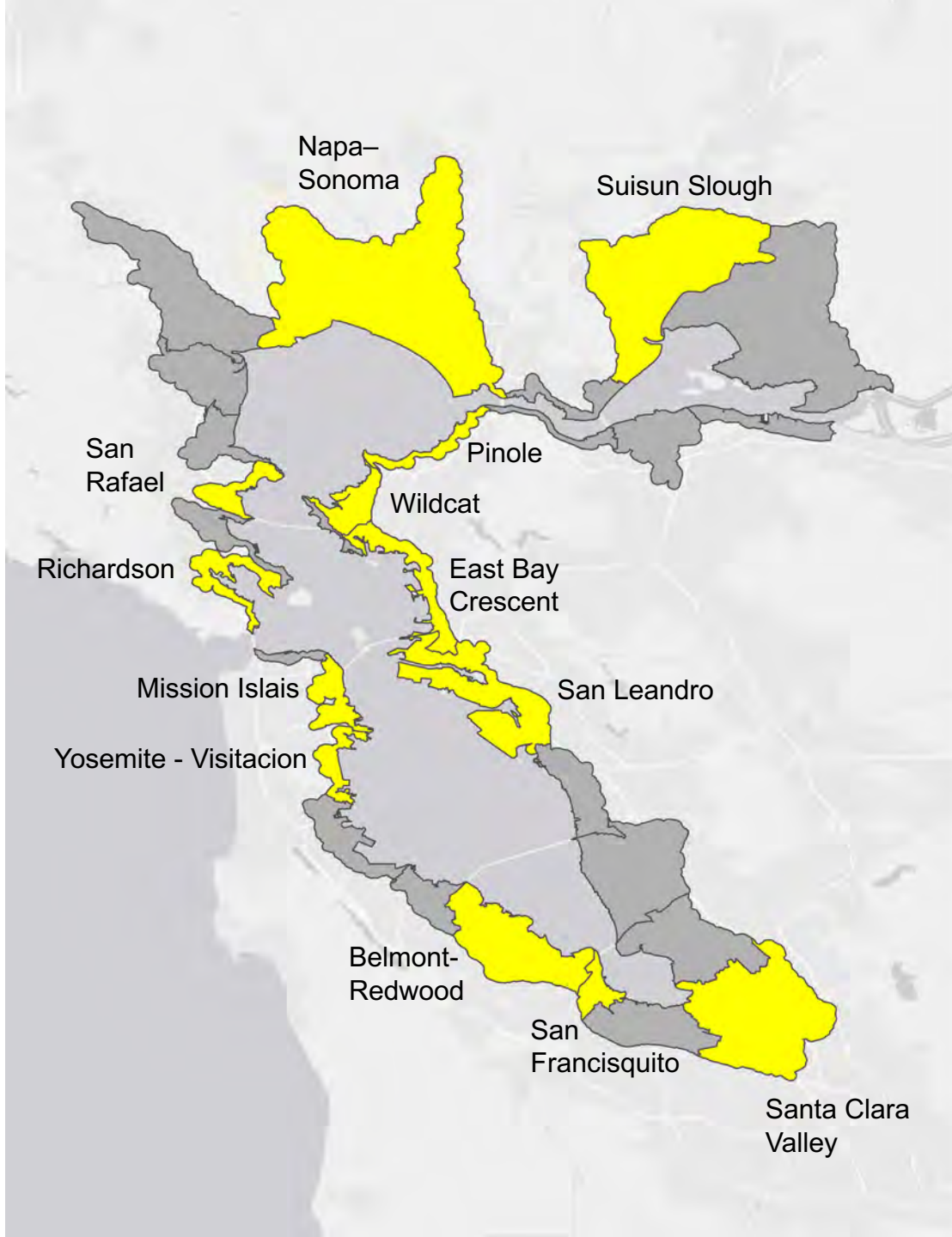
Can we
aggregate
information by
OLU?

OLU = areas with
shared geophysical
and land use
characteristics suited
for particular sets of
adaptation strategies
areas

OLUs provide:

- Convenient geographic unit to start grouping vulnerability assessment results
- Geographic units with shared physical and land use characteristics that lend themselves to certain sets of adaptation strategies
- A geographic framework being used in other projects regionwide, such as work in San Mateo and Marin, and work by Mark Stacey
- A way to reorganize our research rather than substantively changing it





We will start by synthesizing vulnerability assessment results for

- 13 OLUs
- With all four asset categories (transportation, PCAs, PDAs and vulnerable communities)
- And geographic spread