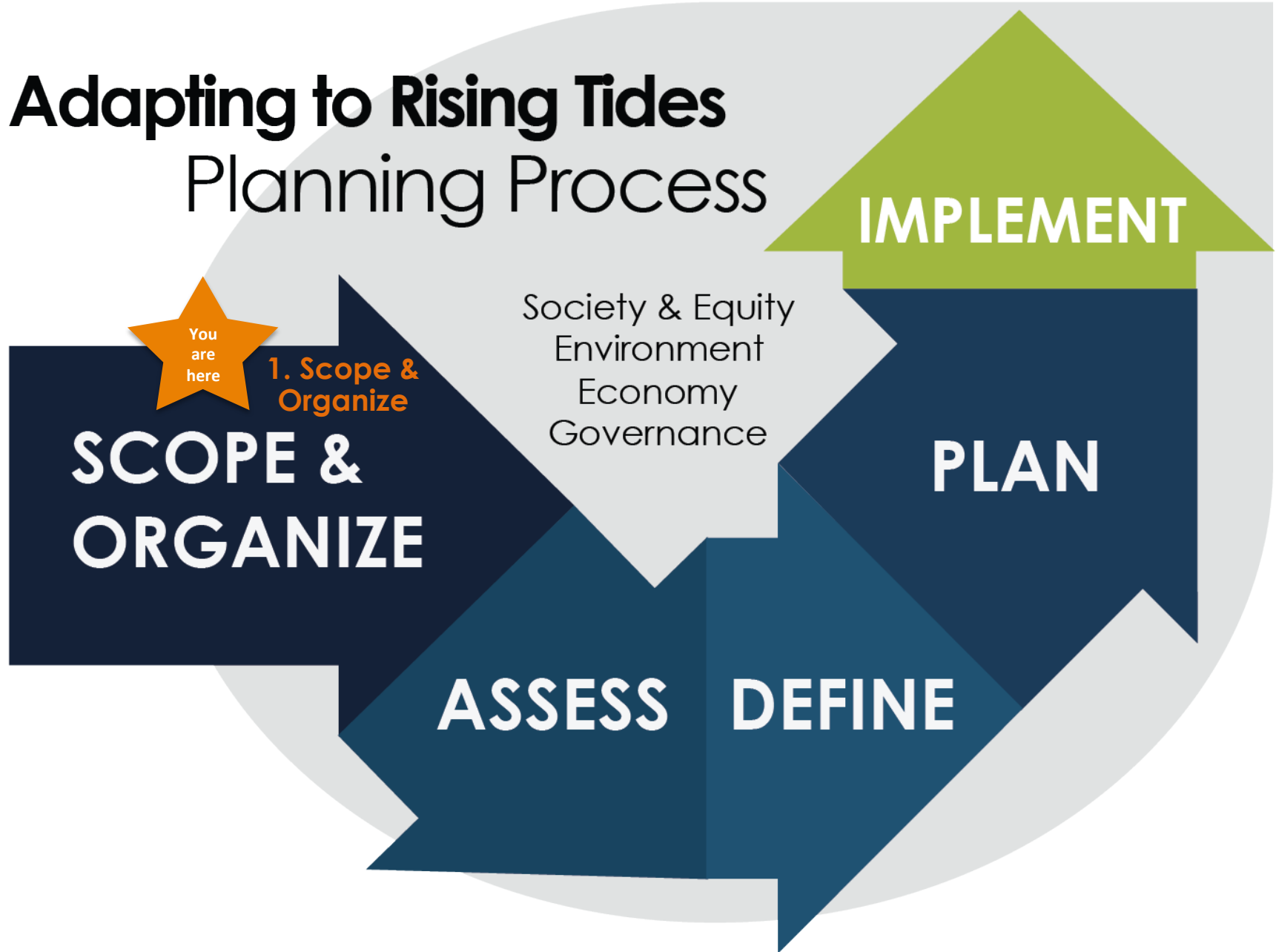


# Adapting to Rising Tides Planning Process



- **Define the project area, assets and climate impacts to be considered**



- **Convene a working group, and agree on project communications practices**
- **Set project resilience goals**

*The beginning is the most important part of the work. - Plato*

**SCOPE &  
ORGANIZE**

# project area

The geographic boundaries and scale of a project that help to (broadly) set the planning context



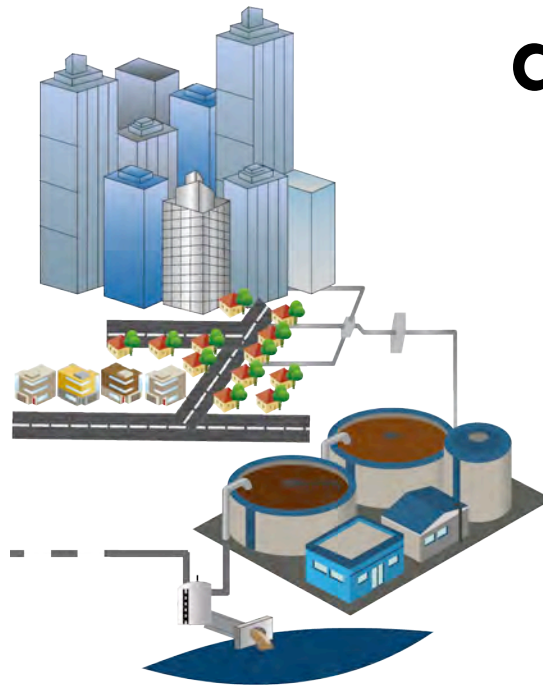
**SCOPE &  
ORGANIZE**

# asset list

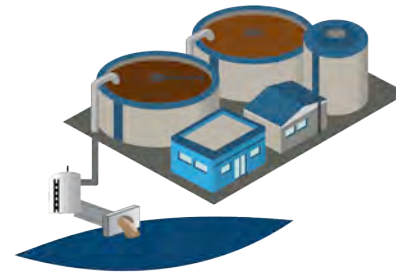
**The assets, sectors and  
services that will be  
addressed in the  
project**



sector / asset category



asset system



asset



asset component

SCOPE &  
ORGANIZE

# climate impacts

The potential effects that a changing climate could have on society and equity, the economy, environment and governance



**SCOPE &  
ORGANIZE**

# working group

**Project participants who represent the assets, agencies, organizations, communities, and public and private interests, values and viewpoints in the project area**





**SCOPE &  
ORGANIZE**

# **project resilience goals**



**Goals that define desired  
outcomes of a climate  
change planning effort,  
and support future  
project decisions**

**Next up...**

