

Sources: Esri, USGS, NOAA, Esri, HERE, DeLorme, MapmyIndia, © OpenStreetMap contributors, and the GIS user community

San Mateo County Community Indicators: Race, Ethnicity, Language

- Concentration (13% and more) households without an adult proficient in English
- Concentration (68% and more) People of Color
- Both limited English speakers and People of Color

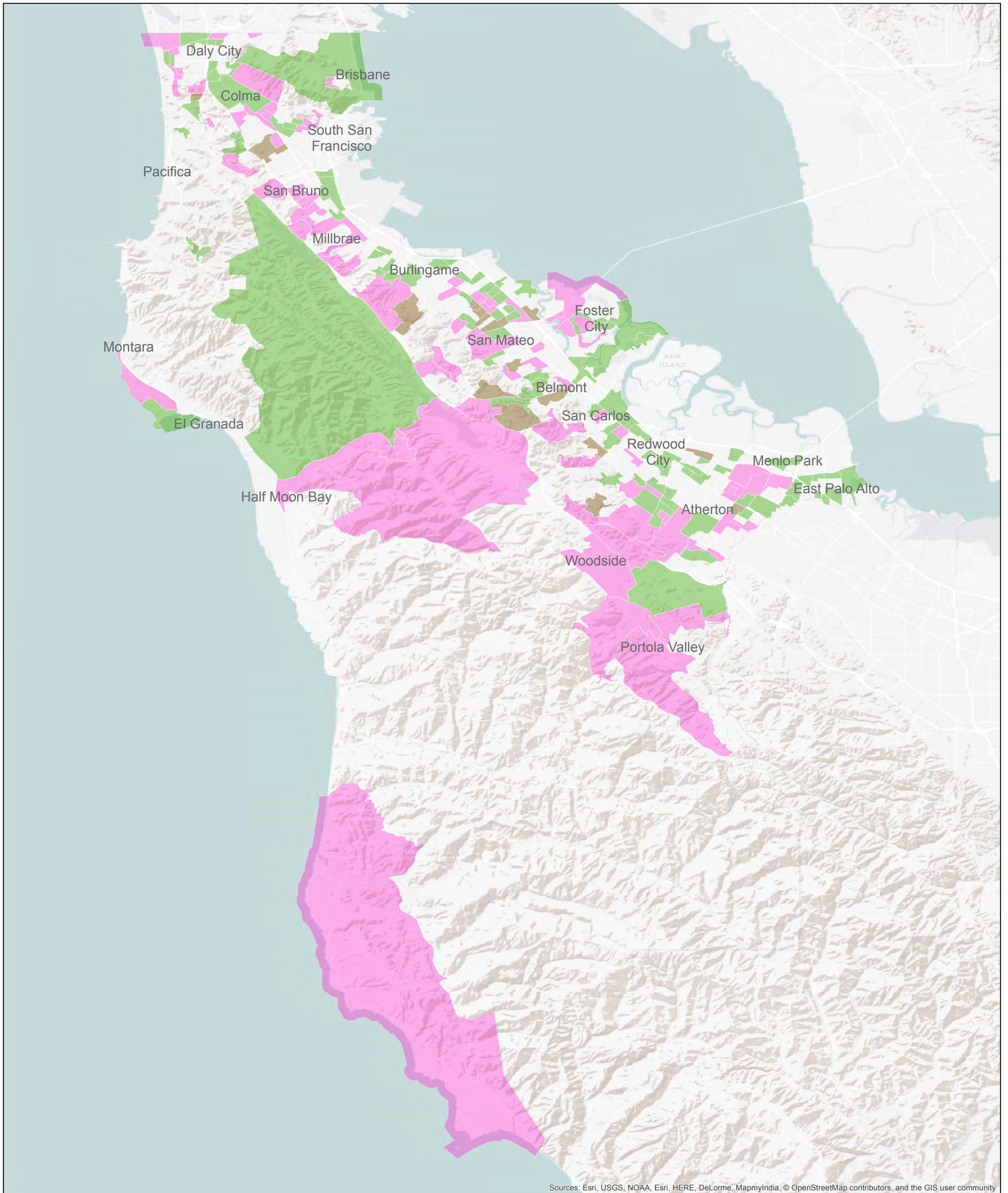
Data: 2010-2014 American Community Survey

Methods: Significant concentrations thresholds are based on the current share of the region's population plus half a standard deviation above the regional mean. These maps are intended as planning level tools.

Map created by San Francisco Bay Conservation & Development Commission
August 2016

0 5 10
Miles





Sources: Esri, USGS, NOAA, Esri, HERE, DeLorme, MapmyIndia, © OpenStreetMap contributors, and the GIS user community

San Mateo County Community Indicator: Age

- Concentration (8% and greater) of population under 5 years old
- Concentration (10% and greater) of population 75 years and over
- Concentration of both under 5 and 75 and over

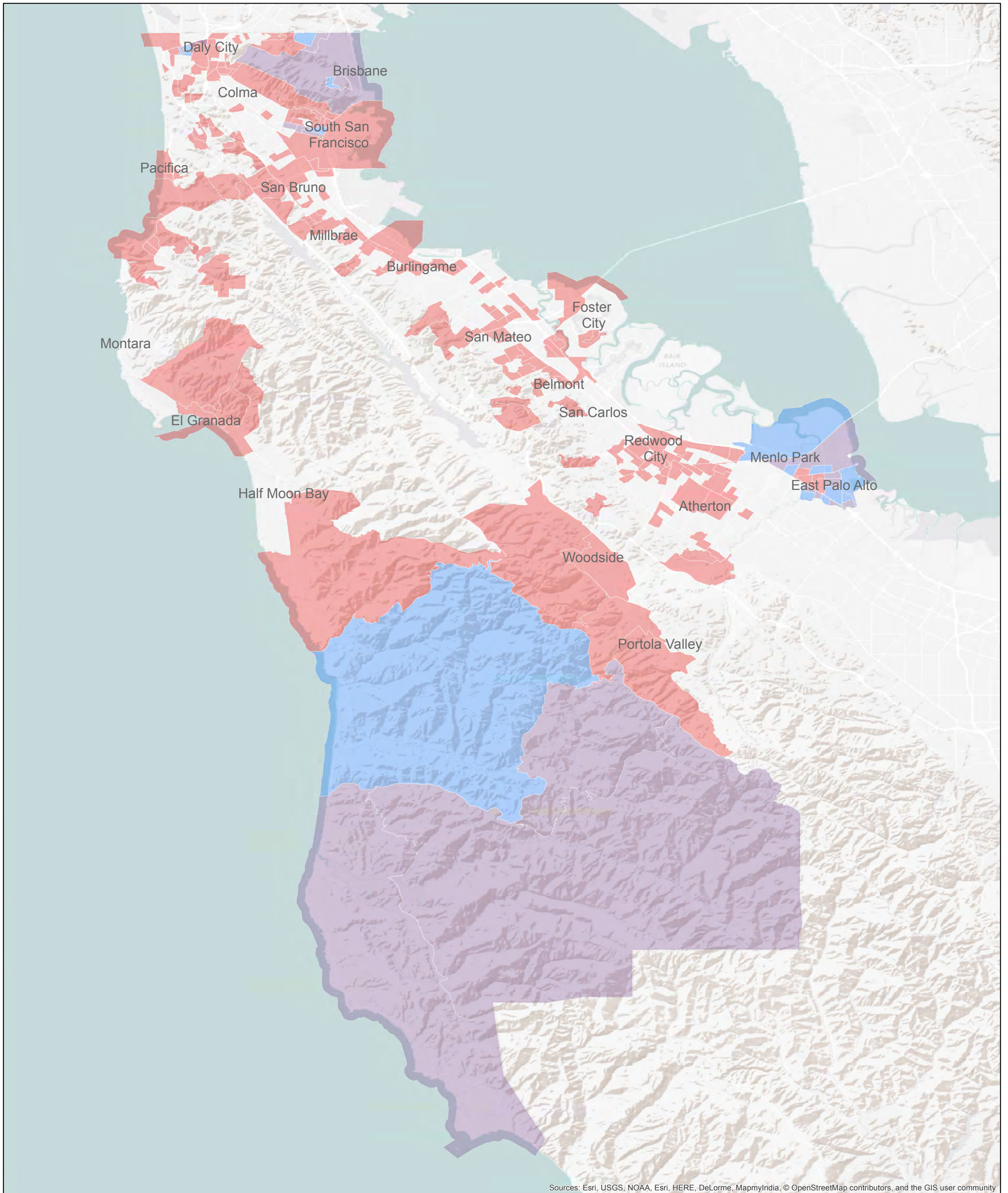
Data: 2010-2014 American Community Survey

Methods: Significant concentrations thresholds are based on the current share of the region's population plus half a standard deviation above the regional mean. These maps are intended as planning level tools.

Map created by San Francisco Bay Conservation & Development Commission
August 2016

0 5 10
Miles





Sources: Esri, USGS, NOAA, Esri, HERE, DeLorme, MapmyIndia, © OpenStreetMap contributors, and the GIS user community

San Mateo County Community Indicators: Housing and Transportation Cost Burden

- Concentration renters and owners housing cost burdened (spending greater than 50% of household income on housing)
- Concentration transportation cost burden (spending greater than 5% of household income on transportation)
- Both housing and transportation cost burden

Data: 2010-2014 American Community Survey, Metropolitan Transportation Commission

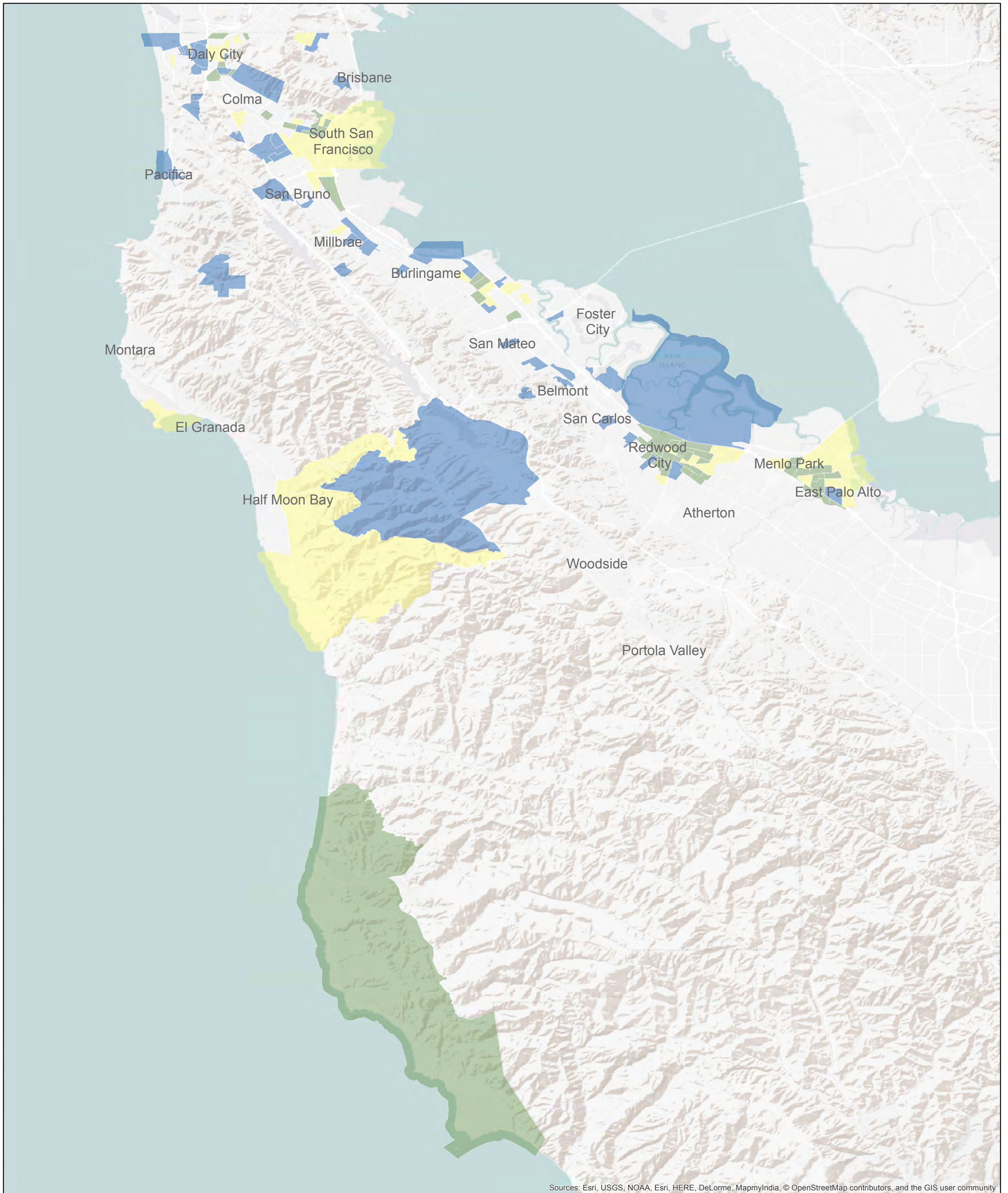
Methods: Significant concentrations thresholds are based on the current share of the region's population plus half a standard deviation above the regional mean. These maps are intended as planning level tools.

Map created by San Francisco Bay Conservation & Development Commission

August 2016

0 5 10
Miles





Sources: Esri, USGS, NOAA, Esri, HERE, DeLorme, MapmyIndia, © OpenStreetMap contributors, and the GIS user community

San Mateo County Community Indicators: Income and Education

- Concentration (33% or more) very low income households
- Concentration (19% or more) population without a High School Diploma
- Both very low income households and population without a High School Diploma

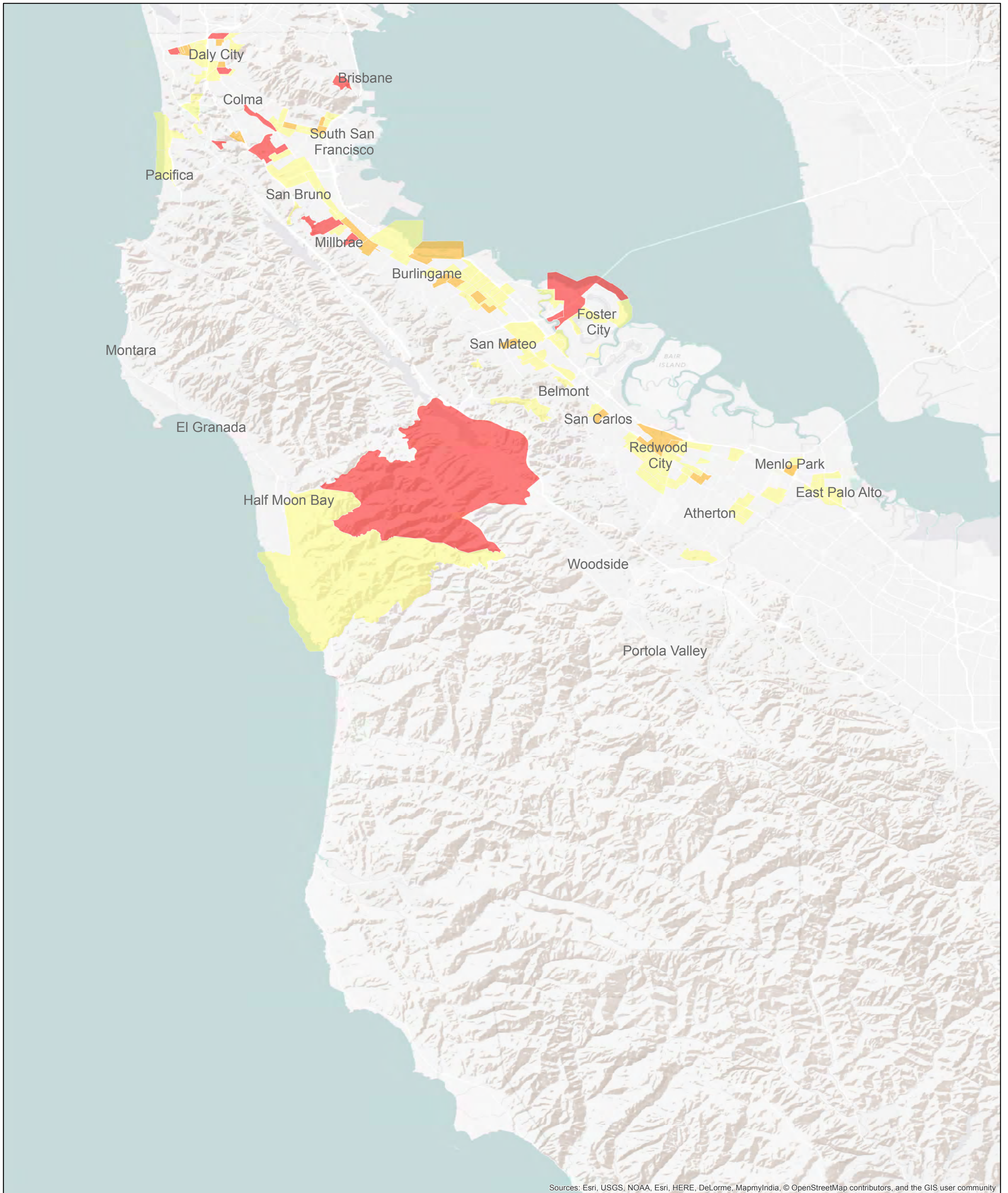
Data: 2010-2014 American Community Survey

Methods: Significant concentrations thresholds are based on the current share of the region's population plus half a standard deviation above the regional mean. These maps are intended as planning level tools.

Map created by San Francisco Bay Conservation & Development Commission
August 2016

0 5 10 Miles





Sources: Esri, USGS, NOAA, Esri, HERE, DeLorme, MapmyIndia, © OpenStreetMap contributors, and the GIS user community

San Mateo County Community Indicators: Renters and Access to Vehicles

- Concentration (55% or more) rental households
- Concentration (15% or more) households without access to a vehicle
- Both rental households and without access to a vehicle

Data: 2010-2014 American Community Survey

Methods: Significant concentrations thresholds are based on the current share of the region's population plus half a standard deviation above the regional mean. These maps are intended as planning level tools.

Map created by San Francisco Bay Conservation & Development Commission
August 2016

0 5 10
Miles

